

# **PANTONE®**

## **FASHION COLOR REPORT**

### **SPRING 2016**

New York Fashion Week  
September 10-17

A publication of the Pantone Color Institute™

# PANTONE® FASHION COLOR REPORT

SPRING 2016 New York Fashion Week  
September 10-17

A publication of the Pantone Color Institute

TOP 10 COLORS

3

THE DESIGNERS

16

THE INFLUENCERS

47

COLOR LISTING & VALUES

52



# TOP 10 COLORS

An Evolving Color Landscape

# PANTONE FASHION COLOR REPORT

## SPRING 2016: A Transporting and Transformative Canvas

**“Colors this season transport us to a happier, sunnier place where we feel free to express a wittier version of our real selves.”**

*Leatrice Eiseman*

*Executive Director, Pantone Color Institute*

Influenced by the world of art, new global doors opening and the desire to disconnect from technology and unwind, designers this season have gravitated toward a palette that is first and foremost calming. Paying homage to the beauty of natural resources, colors emerging in the Spring collections serve as vehicles that transport wearers to more tranquil, mindful environs which encourage relaxation first, followed by curiosity and exploration.

Designers were also inspired by the contrast of urban design and lush vegetation, leading to unexpected color combinations and collections reminiscent of architecture, travel and nostalgia. By creating looks that truly represent the world we live in, both constructed and organic, designers sought to awaken a sense of reflection, followed by playful escapism. Artists, many of whom are known for bold color usage and strong shapes and lines, played an influential role in this season's styles – from Matisse, Picasso and Frank Stella to Esther Stewart and Sam Falls. With Cuba and other destinations south of the border top of mind, designers are playing with courageous color statements that aren't afraid to be vibrant but at the same time are combined with quieting, classic and more natural tones.

“Colors this season transport us to a happier, sunnier place where we feel free to express a wittier version of our real selves,” said Leatrice Eiseman, executive director of the Pantone Color Institute. “With our culture still

surrounded by so much uncertainty, we are continuing to yearn for those softer shades that offer a sense of calm and relaxation.”

### A UNISEX PALETTE

Colors this season transcend cultural and gender norms. Vivid brights give way to excitement and optimism, though quiet stability prevails in this season's palette. For Spring 2016 there are truly no perceivable distinctions in color choices between the men's and women's collections, both of which focus on a desire to breathe and reflect, then play.

The soothing, calming nature of colors in the Spring collections are led by **Rose Quartz**, a persuasive yet gentle tone that conveys compassion and a sense of composure. Like a serene sunset, flushed cheek or budding flower, Rose Quartz reminds us to reflect on our surroundings during the busy but lighthearted spring and summer months.

The fashion and design communities, and consequently, consumers, have been in love with orange for several seasons. Coming to the fore this Spring is **Peach Echo**, a shade that emanates friendlier qualities, evoking warmth and accessibility. It is an all-encompassing, tempered companion in the playful orange family.

Weightless and airy, like the expanse of the blue sky above us, **Serenity** comforts with a calming effect, bringing a feeling of respite even in turbulent times. A transcendent blue, Serenity provides us with a naturally connected sense of space.

A maritime-inspired blue, **Snorkel Blue** plays in the navy family, but with a happier, more energetic context.





# PANTONE FASHION COLOR REPORT

## SPRING 2016: A Transporting and Transformative Canvas

The name alone implies a relaxing vacation and encourages escape. It is striking yet still, with lots of activity bursting from its undertones.

While the majority of the Spring/Summer palette trends toward calmness, a few diversions from the theme emerge that offer a contrast. With **Buttercup**, designers reveal a shining beacon transporting its wearer to a happier, sunnier place.

A shade of aqua that leans toward the green family, **Limpet Shell** is clear, clean and defined. Suggestive of clarity and freshness, its crisp and modern influences evoke a deliberate, mindful tranquility.

As in most any season, the need for neutrals arises. Essentially a basic, the subtlety of the lilac undertone in, **Lilac Gray**, adds a distinctive edge to this classic gray shade.

The high energy **Fiesta** is a harbinger of excitement, encouraging free-spirited exploration to unknown but welcoming locales. A strong and fiery, yellow-based red, the vivid Fiesta provides a stark contrast to the calming, softer nature of this season's palette.

A transitional color that will take us through the seasons, **Iced Coffee** manifests as another strong neutral for the season. With its natural earthy quality, the softness and subtlety of Iced Coffee creates a stable foundation when combined with the rest of this season's palette.

**Green Flash** calls on its wearer to explore, push the envelope and escape the mundane, radiating an openness that combines with the rest of the palette in unexpected but serendipitous ways. The popularity of this brilliant hue is representative of nature's persistent influence even in urban environments, a trend continuing to inspire designers.

## TOP 10 COLORS

The soothing, calming nature of colors in the Spring collections are led by **PANTONE 13-1520 Rose Quartz**, a persuasive yet gentle tone that conveys compassion and a sense of composure. Like a serene sunset, flushed cheek or budding flower, Rose Quartz reminds us to reflect on our surroundings during the busy but lighthearted spring and summer months.

*Leatrice Eiseman*  
Executive Director, Pantone Color Institute

### Pairs Well With:

PANTONE 16-1548 Peach Echo

PANTONE 15-3919 Serenity

PANTONE 16-3905 Lilac Gray

### Designers using Rose Quartz



p. 17



p. 18



p. 19



p. 20



p. 21

# ROSE QUARTZ

## PANTONE 13-1520

*One of 210 New Colors for FASHION, HOME + INTERIORS*

## TOP 10 COLORS

The fashion and design communities, and consequently, consumers, have been in love with orange for several seasons. Coming to the fore this Spring is **PANTONE 16-1548, Peach Echo**, a shade that emanates friendlier qualities, evoking warmth and accessibility. It is an all-encompassing, tempered companion in the playful orange family.

*Leatrice Eiseman*

*Executive Director, Pantone Color Institute*

### Pairs Well With:

PANTONE 15-3919 Serenity

PANTONE 13-1520 Rose Quartz

PANTONE 16-3905 Lilac Gray

### Designers using Peach Echo



p. 22



p. 23



p. 24



p. 25

# PEACH ECHO

## PANTONE 16-1548

*One of 210 New Colors for FASHION, HOME + INTERIORS*

# TOP 10 COLORS

Weightless and airy, like the expanse of the blue sky above us, **PANTONE 15-3919 Serenity** comforts with a calming effect, bringing a feeling of respite even in turbulent times. A transcendent blue, Serenity provides us with a naturally connected sense of space.

*Leatrice Eiseman*

*Executive Director, Pantone Color Institute*

## **Pairs Well With:**

PANTONE 16-1548 Peach Echo

PANTONE 19-4049 Snorkel Blue

PANTONE 12-0752 Buttercup

## Designers using Serenity



p. 26



p. 27



p. 28

# SERENITY

## PANTONE 15-3919

*One of 210 New Colors for FASHION, HOME + INTERIORS*

# TOP 10 COLORS

A maritime-inspired blue, **PANTONE 19-4049 Snorkel Blue** plays in the navy family, but with a happier, more energetic context.

The name alone implies a relaxing vacation and encourages escape. It is striking yet still, with lots of activity bursting from its undertones.

*Leatrice Eiseman*

*Executive Director, Pantone Color Institute*

**Pairs Well With:**

PANTONE 15-1040 Iced Coffee

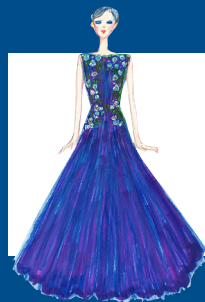
PANTONE 12-0752 Buttercup

PANTONE 16-1548 Peach Echo

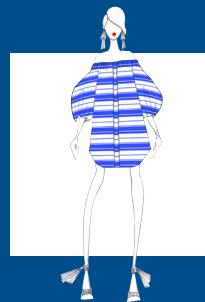
## Designers using Snorkel Blue



p. 29



p. 30



p. 31



p. 32

# SNORKEL BLUE

## PANTONE 19-4049

## TOP 10 COLORS

While the majority of the Spring/Summer palette trends toward calmness, a few diversions from the theme emerge that offer a contrast. **With PANTONE 12-0752 Buttercup, designers reveal a shining beacon transporting its wearer to a happier, sunnier place.**

*Leatrice Eiseman*

*Executive Director, Pantone Color Institute*

### **Pairs Well With:**

PANTONE 19-4049 Snorkel Blue

PANTONE 15-3919 Serenity

PANTONE 16-3905 Lilac Gray

### Designers using Buttercup



# BUTTERCUP

## PANTONE 12-0752

## TOP 10 COLORS

A shade of aqua that leans toward the green family, **PANTONE 13-4810 Limpet Shell** is **clear, clean and defined**. Suggestive of clarity and freshness, its crisp and modern influences evoke a deliberate, mindful tranquility.

*Leatrice Eiseman*

*Executive Director, Pantone Color Institute*

### Pairs Well With:

PANTONE 16-1548 Peach Echo

PANTONE 13-1520 Rose Quartz

PANTONE 15-1040 Iced Coffee

### Designers using Limpet Shell



p. 35



p. 36



p. 37

# LIMPET SHELL

## PANTONE 13-4810

*One of 210 New Colors for FASHION, HOME + INTERIORS*

## TOP 10 COLORS

As in most any season, the need for neutrals arises. Essentially a basic, **the subtlety of the lilac undertone in PANTONE 16-3905 Lilac Gray, adds a distinctive edge to this classic gray shade.**

*Leatrice Eiseman*

*Executive Director, Pantone Color Institute*

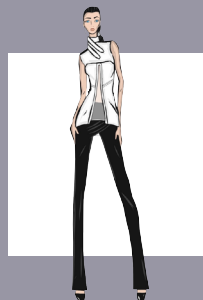
### **Pairs Well With:**

PANTONE 15-0146 Green Flash

PANTONE 17-1564 Fiesta

PANTONE 15-1040 Iced Coffee

### Designers using Lilac Gray



p. 38



p. 39



p. 40

# LILAC GRAY

## PANTONE 16-3905

*One of 210 New Colors for FASHION, HOME + INTERIORS*



## TOP 10 COLORS

The high energy **PANTONE 17-1564 Fiesta** is a harbinger of excitement, encouraging free-spirited exploration to unknown but welcoming locales. A strong and fiery, yellow-based Red, the vivid Fiesta provides a stark contrast to the calming, softer nature of this season's palette.

*Leatrice Eiseman*

*Executive Director, Pantone Color Institute*

### Pairs Well With:

PANTONE 15-0146 Green Flash

PANTONE 19-4049 Snorkel Blue

PANTONE 13-4810 Limpet Shell

### Designers using Fiesta



p. 41



p. 42

# FIESTA

## PANTONE 17-1564

## TOP 10 COLORS

A transitional color that will take us through the seasons, **PANTONE 15-1040 Iced Coffee** manifests as another strong neutral for the season. With its natural earthy quality, the softness and subtlety of Iced Coffee creates a stable foundation when combined with the rest of this season's palette.

*Leatrice Eiseman*

*Executive Director, Pantone Color Institute*

### **Pairs Well With:**

PANTONE 15-3919 Serenity

PANTONE 13-1520 Rose Quartz

PANTONE 16-3905 Lilac Gray

### Designers using Iced Coffee



p. 43



p. 44

# ICED COFFEE

## PANTONE 15-1040

## TOP 10 COLORS

**PANTONE 15-0146 Green Flash** calls on its wearer to explore, push the envelope and escape the mundane, radiating an openness that combines with the rest of the palette in unexpected but serendipitous ways. The popularity of this brilliant hue is representative of nature's persistent influence even in urban environments, a trend continuing to inspire designers.

*Leatrice Eiseman*

*Executive Director, Pantone Color Institute*

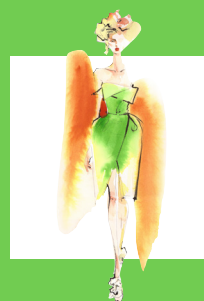
**Pairs Well With:**

PANTONE 19-4049 Snorkel Blue

PANTONE 13-4810 Limpet Shell

PANTONE 15-3919 Serenity

### Designers using Green Flash



p. 45



p. 46

# GREEN FLASH

## PANTONE 15-0146



# THE DESIGNERS

reveal their inspiration and must-have items for Spring 2016.

# THE DESIGNERS



## TOSIA

### PROMINENT COLORS

Cloud Blue, Sandy Taupe, Blush Pink, Deep Indigo and Pale Ivory.

### INSPIRATION

Spring 2016 was inspired by a recent journey to Morocco and the French influence that pervades the region. The color's subdued palette was drawn primarily from the stunning, arid landscape of Ouarzazate, Morocco, from the multitude of Blues in the clear skies, the Taupe and Soft Blush of the desert sands, and the Ivory of sail cloth tents.

### SIGNATURE COLORS

Blush Pink is prominent through the collection. It's a perfect complement to so many other colors and conveys both lightness and intrigue.

### MUST-HAVE ITEM FOR SPRING 2016

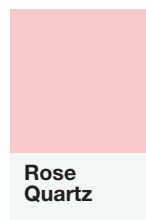
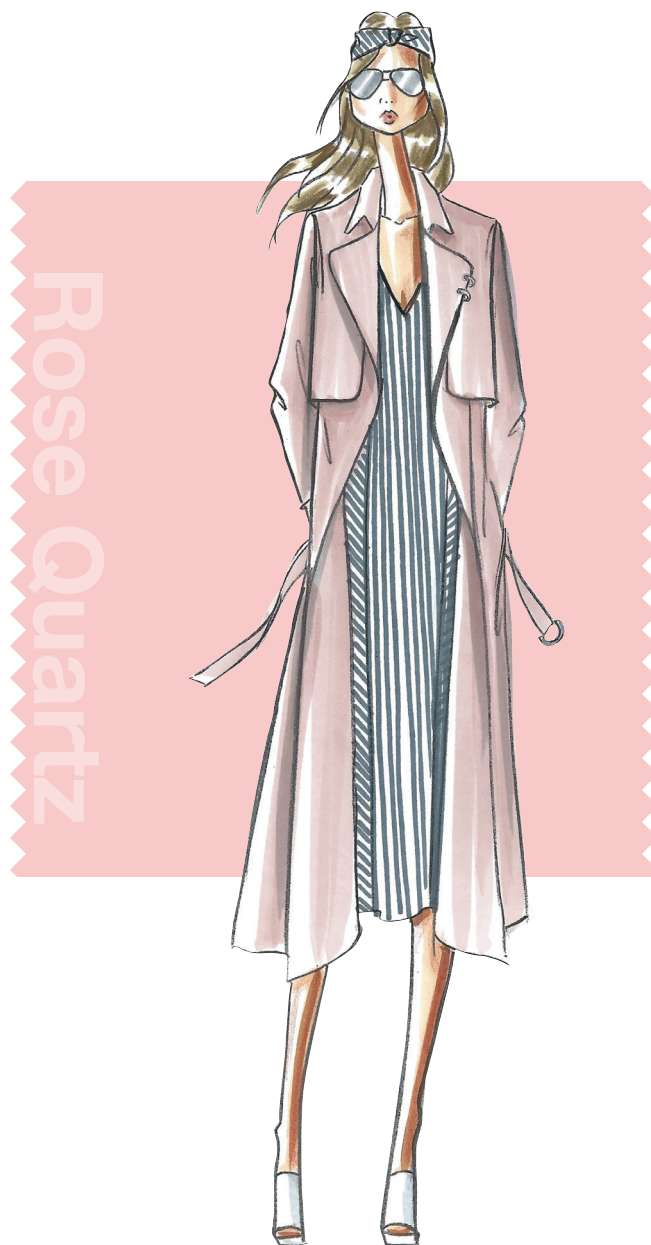
The Blush Pink draped twill trench coat with pierced lapels is easy to throw on over any ensemble and feels as though you are slipping into a robe.

### HOW DO YOU USE COLOR TO IMPART A MOOD OR EMOTION?

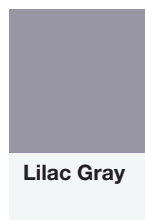
Color can evoke an atmosphere. For Spring, the hushed desert tones, rendered in floating caftan gowns, relaxed smoking jackets, and voluminous wide-legged pants, bring to mind dreamy days spent languishing in Moroccan riads that stretch into vibrant, sultry nights.

### CONNECT WITH TOSIA

Website: [www.tosianyc.com](http://www.tosianyc.com)  
Facebook: [facebook.com/tosianyc](https://www.facebook.com/tosianyc)  
Twitter Handle: [tosia\\_nyc](https://twitter.com/tosia_nyc)  
Instagram: [tosia\\_nyc](https://www.instagram.com/tosia_nyc)



**Rose  
Quartz**



**Lilac Gray**

®

## THE DESIGNERS



### HOUGHTON

#### PROMINENT COLORS

For Spring/Summer 2016, I chose a cool palette and muted tones/colors: Creamy Ivory, Sage, Dusty Rose, Chalk White, Blush, Midnight Blue, Camel, Straw.

#### INSPIRATION

I think that summer White is chic year round. I try and find a palette of colors that complements our neutral palette each season and I felt that this pastel and muted palette was relevant for SS '16. Houghton crosses over to our bridal customer and having a constant light palette remains our core.

#### SIGNATURE COLORS

Chalk White combined with Layered Blush as well as Taupe and Navy combo.

#### MUST-HAVE ITEM FOR SPRING 2016

I have an over-sized cargo jacket in Chalk White twill that feels like a denim. It has over-sized buttons, cuffs and belts. I also have a dress that I'm obsessed with, it is a light Ghuipure Chalk White Shirt Dress with a full skirt, Blush silk 1/4 lining and an over-sized Dusty Rose suede jacket with over-sized matching buttons.

#### HOW DO YOU USE COLOR TO IMPART A MOOD OR EMOTION?

I love using a light palette, especially with lace, and I think it's sexy and fun to style, whether with a leather jacket or alone. White and Ivory can be innocent or sexy, so I love leaving the interpretation open.

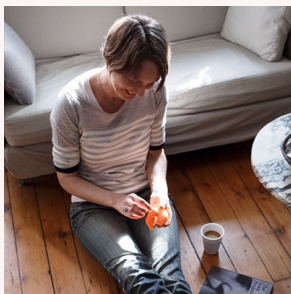
#### CONNECT WITH HOUGHTON

Website: [houghtonnyc.com](http://houghtonnyc.com)  
Facebook: [facebook.com/HoughtonNYC](https://www.facebook.com/HoughtonNYC)  
Twitter Handle: [houghtonnyc](https://twitter.com/houghtonnyc)  
Pinterest: [pinterest.com/HOUGHTONNYC](https://www.pinterest.com/HOUGHTONNYC)  
Instagram: [houghtonnyc](https://www.instagram.com/houghtonnyc)  
Blog: [houghtonnyc.com/blog](http://houghtonnyc.com/blog)



Rose  
Quartz

## THE DESIGNERS



### M.PATMOS

#### PROMINENT COLORS

The colors in the Spring 2016 collection are a combination of bold and rich mixed along with pale and fresh tones with additional brighter colors making for a very clean cut and modern palette. From the idea of Cuba past and present we interlaced the opulent, rich color of PANTONE 19-5511 Hunter Green with the youthful, washed out color of PANTONE 12-1305 Heavenly Pink and PANTONE 13-4404 Ice Flow. Throughout the collection I wanted to sprinkle in some luminosity and glow with PANTONE 12-0643 Blazing Yellow and PANTONE 13-1012 Frosted Almond.

Our main colors are combinations are:

PANTONE 19-4028 Insignia Blue / PANTONE 12-1305 Heavenly Pink / PANTONE 11-0601 Bright White  
PANTONE 19-5511 Hunter Green / PANTONE 19-4151 Skydiver / PANTONE 12-1305 Heavenly Pink  
PANTONE 13-4404 Ice Flow  
PANTONE 12-0643 Blazing Yellow  
PANTONE 13-1012 Frosted Almond

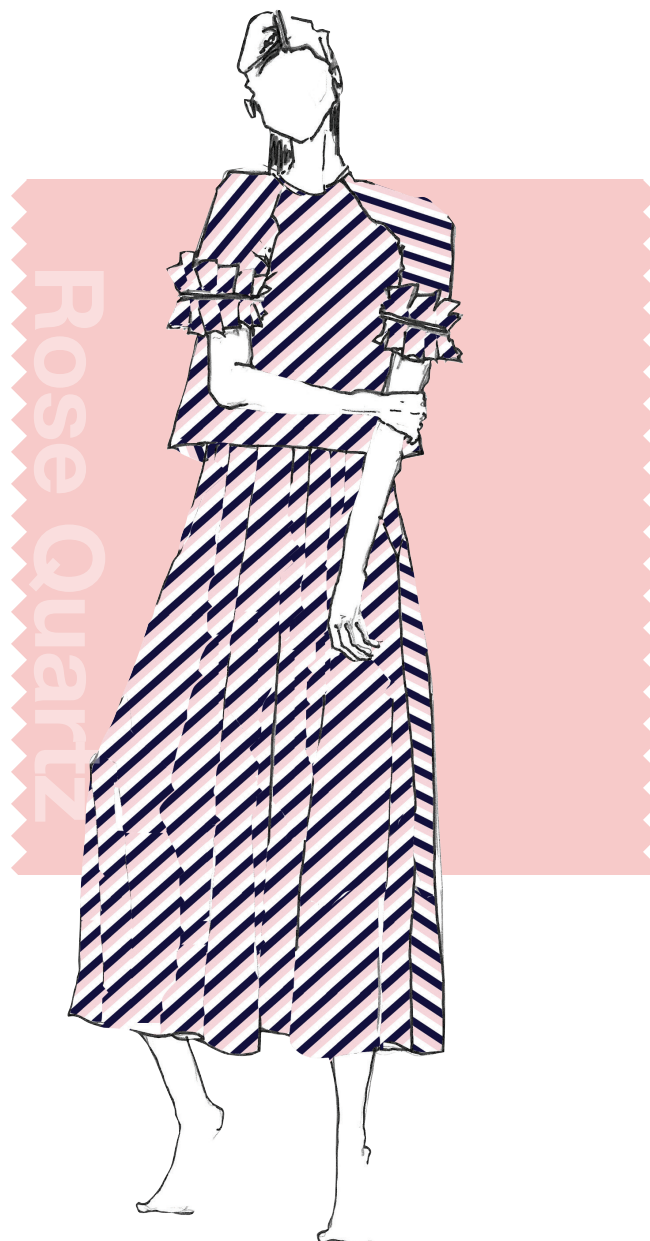
#### INSPIRATION

For our Spring 2016 collection, I felt particularly inspired by Cuban dress, from the sparkling Havana nights to being lost in time on the tired streets of La Habana. With Cuba's bold and colorful presence, I directly translated that into our colors for the collection. Washed colors were mixed within brighter and more playful colors to enhance more unusual, contemporary combinations.

**READ THE COMPLETE INTERVIEW WITH M.PATMOS  
AT [PANTONE.COM/SPRING2016](http://PANTONE.COM/SPRING2016)**

#### CONNECT WITH M.PATMOS

Website: [mpatmos.com](http://mpatmos.com)  
Facebook: [facebook.com/mpatmos](https://facebook.com/mpatmos)  
Twitter Handle: [mpatmos](https://twitter.com/mpatmos)  
Pinterest: [pinterest.com/marciapatmos](https://pinterest.com/marciapatmos)  
Instagram: [mpatmos](https://instagram.com/mpatmos)  
Tumblr: [mpatmos.tumblr.com](https://mpatmos.tumblr.com)



**Rose  
Quartz**



**Lilac Gray**



## THE DESIGNERS



### LELA ROSE

#### PROMINENT COLORS

I played with tonal variations within colors this season which has allowed a beautiful flow from one color story to the next. A Cool Coral (PANTONE 14-1418 Peach Melba) plays off a Neon Cherry (PANTONE 17-1563 Cherry Tomato). Rose Gold appears as a metallic stamping on cotton poplin as well as in fringe cut pebbled silk. A Turquoise Blue (PANTONE 17-4328 Blue Moon) melds with an Icy Aqua (PANTONE 12-5409 Fair Aqua) as well as Silver Metallic.

#### INSPIRATION

The artist Sam Falls was the original inspiration for the collection and the colors are largely drawn from his palette.

#### SIGNATURE COLORS

A bright Citrine (PANTONE 13-0650 Sulphur Spring) is the most important color in the collection. There has been a variation on this color in every collection for years, making it a signature of the brand.

#### MUST-HAVE ITEM FOR SPRING 2016

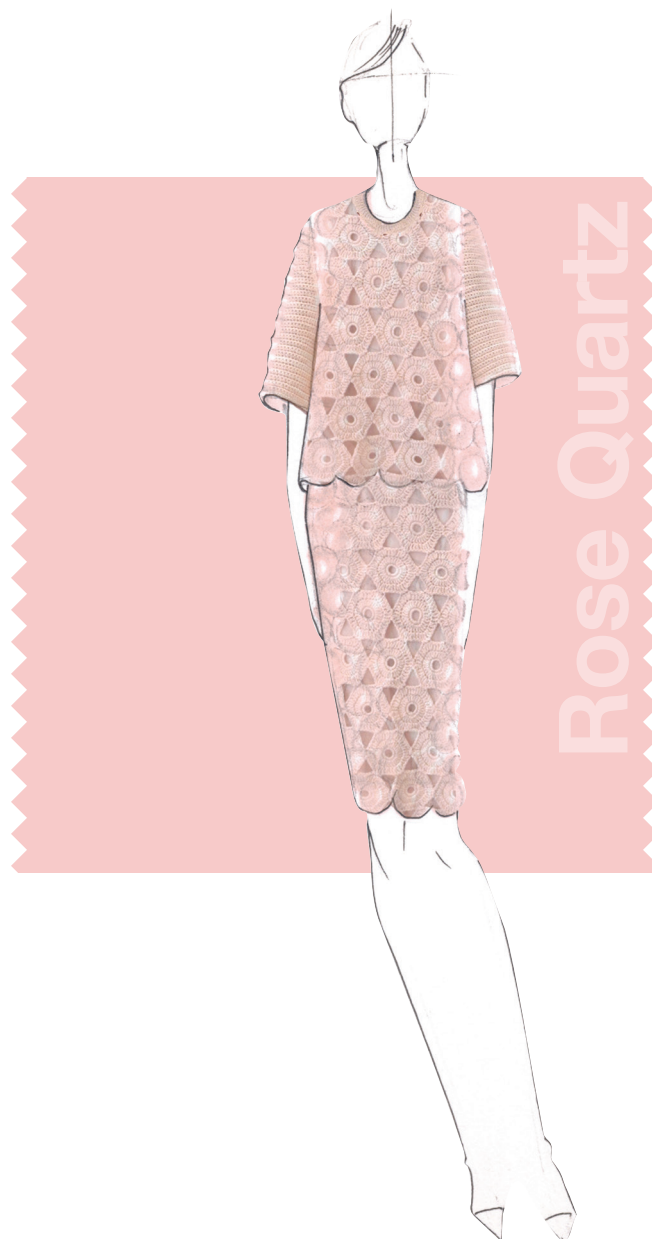
A pale Apricot (PANTONE 12-0917 Bleached Apricot) hand-crocheted knit tee shirt and skirt is a must-have look. It can be both dressy and casual at the same time and worn in many different ways.

#### HOW DO YOU USE COLOR TO IMPART A MOOD OR EMOTION?

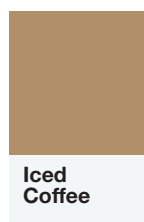
For me, color is one of the easiest ways to affect your outlook and mood. I love to design in a palette that feels inviting and fun. I love to wear bright color as I find I feel happier in color and less so when wearing black.

#### CONNECT WITH LELA ROSE

Website: [lelarose.com](http://lelarose.com)  
Facebook: [facebook.com/LelaRoseStudio](https://facebook.com/LelaRoseStudio)  
Twitter Handle: [lela\\_rose](https://twitter.com/lela_rose)  
Pinterest: [pinterest.com/lelarosestudio](https://pinterest.com/lelarosestudio)  
Instagram: [lelarose](https://instagram.com/lelarose)  
Blog: [lelarose.com/stitch-in-time/](http://lelarose.com/stitch-in-time/)  
Tumblr: [lelarosestudio.tumblr.com](http://lelarosestudio.tumblr.com)



Rose  
Quartz



Iced  
Coffee



## THE DESIGNERS



### CHARLES YOUSSEF

#### PROMINENT COLORS

The Spring 2016 collection focuses on soft, comfortable, cotton Whites mixed with harder silk porcelain Whites, so there is a play on matte and shine. Blush, Peach and Apricot tones are juxtaposed against deep vibrant Navy and embellished Jet Black. This is accented by playful touches of jewel toned Emerald Green.

#### INSPIRATION

I'm inspired by the hard, angular and polished surfaces of Tadao Ando's architecture. His underground museum in Japan is a beautiful maze of light and shadow that's built under a vibrant circular Green lawn. I pictured the stunning Fernanda Ly running across the circular lawn, her Blush colored hair blowing in the wind. I found similar color combinations in the paintings of Esther Stewart. Her mix of soft Whites, Blush and Navy tones in sharp triangular shapes really sparked my imagination.

#### SIGNATURE COLORS

It's a soft, delicate and refreshing Pearl Blush that's reminiscent of a fresh energetic Spring feeling. The color is organic and complements the natural beauty of women.

#### MUST-HAVE ITEM FOR SPRING 2016

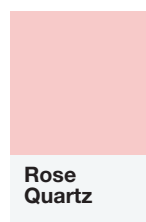
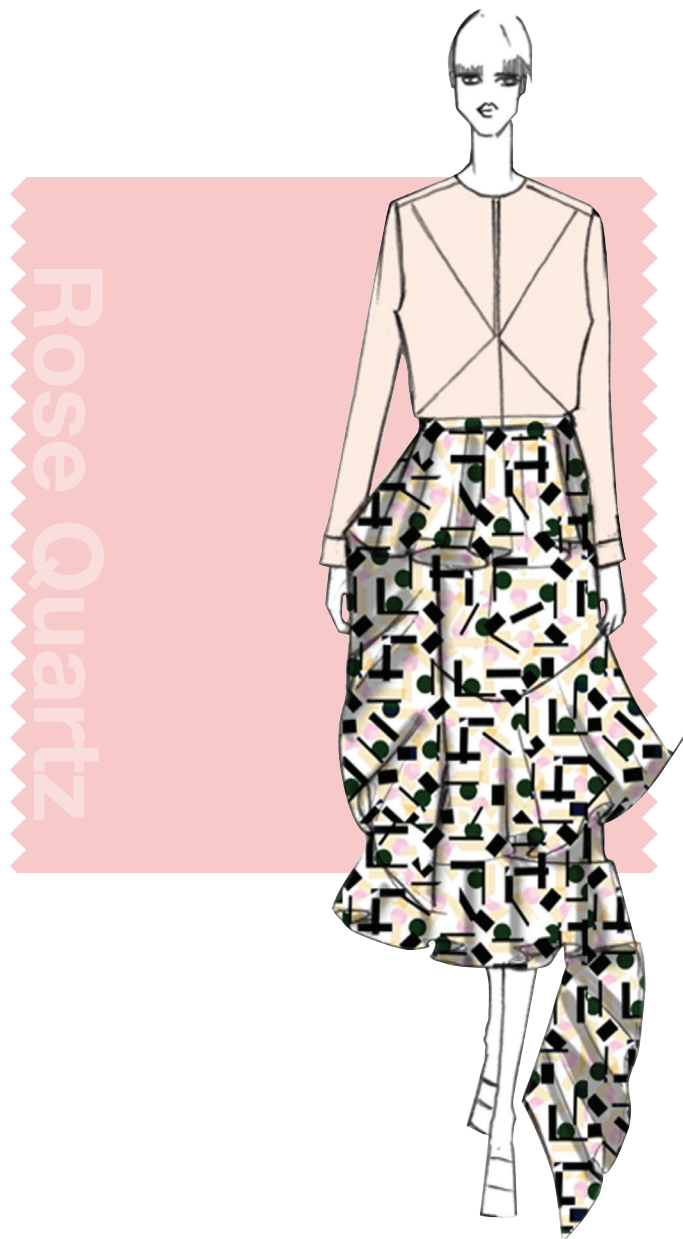
It's our origami folded poplin shirt in Blush.

#### HOW DO YOU USE COLOR TO IMPART A MOOD OR EMOTION?

Color plays such an important role in our lives because it can make us feel so many different things. The soothing Whites and Nudes in the collection create a feeling of calm serenity allowing you to relax, while the bright accents of Emerald Green spark an energetic creativity.

#### CONNECT WITH CHARLES YOUSSEF

Website: [charlesyoussef.com](http://charlesyoussef.com)  
facebook.com/charles.youssef1  
Twitter Handle: [charles\\_youssef](https://twitter.com/charles_youssef)  
Pinterest: [pinterest.com/charlesyoussef](https://pinterest.com/charlesyoussef)  
Instagram: [charlesyoussef](https://www.instagram.com/charlesyoussef)



Rose  
Quartz



Lilac  
Gray

## THE DESIGNERS



### CHRISTIAN SIRIANO

#### PROMINENT COLORS

The colors in this collection are a mix of Sheer Pink, Apricot Blush, Bone White, Whisper White and Peach Pearl.

#### INSPIRATION

The imperial cities of Morocco were an initial source of inspiration for my Spring/Summer 2016 collection. I was drawn to the culture and lifestyle, particularly the annual traditional “Feast of the Throne” celebration in Marrakesh, for which notables dress head to toe in beautifully draped White linens. Nature and architecture of the region were also sources of inspiration for this collection: crisp, clean Sand tones are represented in Cream and Khaki separates for day, with Blush and Sunset tones for evening. The colors found in Moroccan wedding blankets were stimulating and inspiring as well. Decorative wrought iron, wood work, and sculpted stone are interpreted through texture and embroidery. Delicate lattice details echo the light and shadow of local architecture. It is a strikingly romantic and feminine collection.

#### SIGNATURE COLORS

I think the use of Bone White and Seashell Pink make this collection feel light and romantic.

#### MUST-HAVE ITEM FOR SPRING 2016

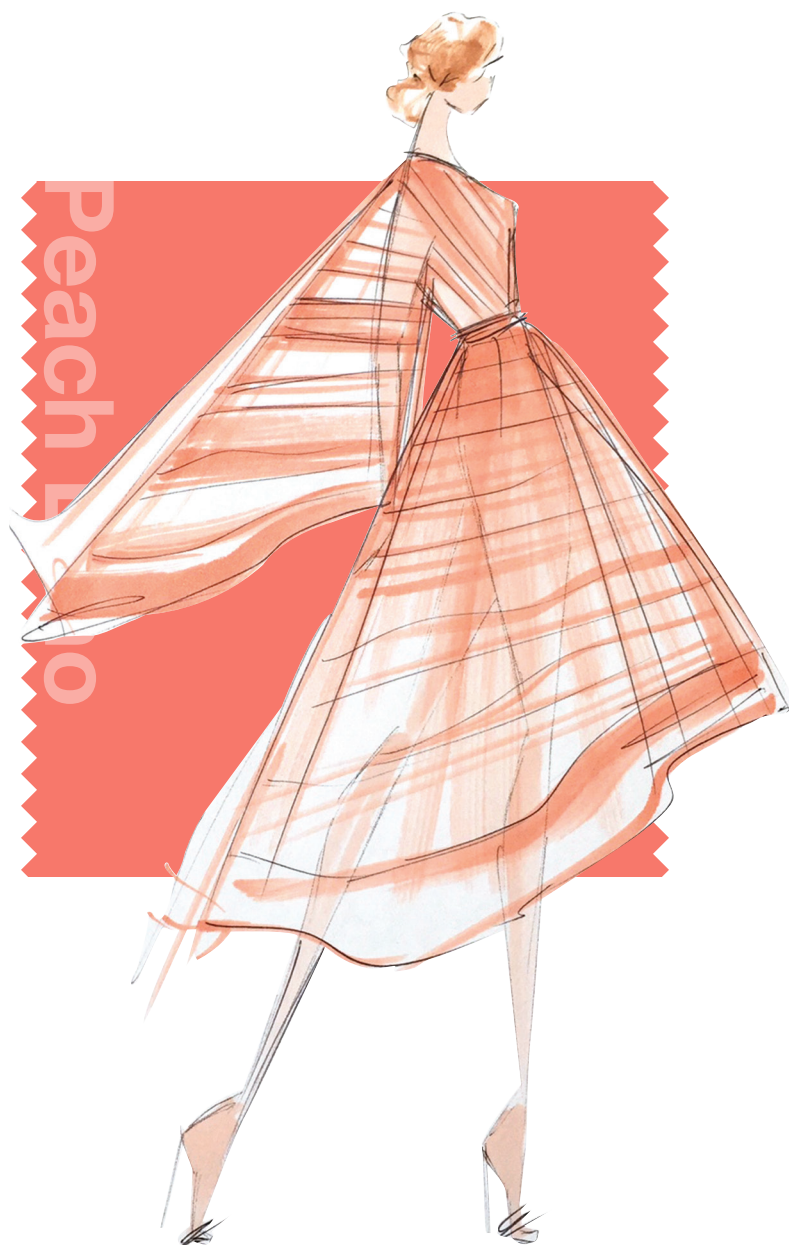
A leaf collar textured silk crepe bias-cut shirtdress is our signature for the season. It is a mixture of White Cream and Sandy-colored stripes.

#### HOW DO YOU USE COLOR TO IMPART A MOOD OR EMOTION?

I like to either be very bold with color and make it very impactful or I like to do the complete opposite and use small amounts of light tones with a very bold pop of color when needed.

#### CONNECT WITH CHRISTIAN SIRIANO

Website: [www.christiansiriano.com](http://www.christiansiriano.com)  
Facebook: [facebook.com/christiansiriano](https://facebook.com/christiansiriano)  
Twitter Handle: [csiriano](https://twitter.com/csiriano)  
Pinterest: [pinterest.com/csiriano](https://pinterest.com/csiriano)  
Instagram: [csiriano](https://instagram.com/csiriano)  
Tumblr: [csiriano.tumblr.com](https://csiriano.tumblr.com)



**Peach  
Echo**



**Rose  
Quartz**

## THE DESIGNERS



Photo courtesy of Patti Hall

### REBECCA MINKOFF

#### PROMINENT COLORS

There was a focus on different shades of Blue. We chose an Azure and a Putty for a bold bohemian vibe and paired them with Poppy Red and a neutral Biscuit.

#### INSPIRATION

I was inspired by the youthful spirit of London in the '60s, particularly Marianne Faithfull's style - that sort of reluctant rock royalty.

#### SIGNATURE COLORS

Sky Blue. I wanted to work with colors that were bold yet feminine, colors Marianne Faithfull would wear today as a modern woman.

#### MUST-HAVE ITEM FOR SPRING 2016

The fringe cape in Gray Plum, our Paris saddle bag with a studded guitar strap in Pale Blush and a cutout boot in our geo print.

#### HOW DO YOU USE COLOR TO IMPART A MOOD OR EMOTION?

I focus on what is refreshing and what I want to wear myself and what my customer would want, even if she doesn't know it yet.

#### CONNECT WITH REBECCA MINKOFF

Website: [rebeccaminkoff.com](http://rebeccaminkoff.com)

Facebook: [facebook.com/rebeccaminkoff](https://facebook.com/rebeccaminkoff)

Twitter Handle: [RebeccaMinkoff](https://twitter.com/RebeccaMinkoff)

Pinterest: [pinterest.com/RebeccaMinkoff](https://pinterest.com/RebeccaMinkoff)

Instagram: [rebeccaminkoff](https://instagram.com/rebeccaminkoff)

Blog: [www.rebeccaminkoff.com/rmedit/](http://www.rebeccaminkoff.com/rmedit/)

Tumblr: [rebeccaminkoff.tumblr.com](http://rebeccaminkoff.tumblr.com)



**Peach  
Echo**



**Rose  
Quartz**



**Lilac  
Gray**

## THE DESIGNERS



### DENNIS BASSO

#### INSPIRATION

The excitement of all of the cities south of the border...  
Mexico, Latin America, South America and Cuba.

#### SIGNATURE COLORS

One of the most important colors is Hot Pink.

#### MUST-HAVE ITEM FOR SPRING 2016

Exotic, floral, multi-color lace jacket with hand-embroidered  
mink puffs in all colors.

#### HOW DO YOU USE COLOR TO IMPART A MOOD OR EMOTION?

Colors have always been a mood changer, whether creating  
a look that's quiet and sultry or vivacious and exhilarating.

#### CONNECT WITH DENNIS BASSO

Website: [dennisbasso.com](http://dennisbasso.com)

Facebook: [facebook.com/dennisbasso](https://facebook.com/dennisbasso)

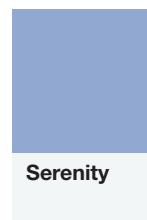
Twitter Handle: [dennisbasso](https://twitter.com/dennisbasso)

Pinterest: [pinterest.com/DennisBassoNYC](https://pinterest.com/DennisBassoNYC)

Instagram: [dennisbasso](https://instagram.com/dennisbasso)



**Peach  
Echo**



**Serenity**



**Buttercup**



## THE DESIGNERS



### ELLA MOSS

#### PROMINENT COLORS

Sunlight Yellow, Fusion Coral and Icy Lilac are paired back to Royal Blue, Peony Pink, Berry Red and Smoky Gray.

#### INSPIRATION

The theme of our Spring 2016 collection is Goddess and Gladiator. Spring takes a mythological journey, inspired by the ethereal beauty of the goddess and the supernatural power and strength of the gladiator.

#### SIGNATURE COLORS

Fusion Coral. This shade of Pink is fresh and delicate but has an energy and boldness in its color. It looks beautiful paired with lace and eyelet neutrals.

#### MUST-HAVE ITEM FOR SPRING 2016

The Dina sweater dress in Platinum has just a hint of metallic, its texture and silhouette give this dress an overall feeling of dreaminess.

#### HOW DO YOU USE COLOR TO IMPART A MOOD OR EMOTION?

We used soft colors in bold prints with hints of metal hardware on beautifully draped silhouettes to echo elements of a warrior muse, perfectly balancing grace with strength.

#### CONNECT WITH ELLA MOSS

Website: [www.ellamoss.com](http://www.ellamoss.com)  
Facebook: [facebook.com/ellamossbrand](https://facebook.com/ellamossbrand)  
Twitter Handle: [ellamoss](https://twitter.com/ellamoss)  
Pinterest: [pinterest.com/ellamoss](https://pinterest.com/ellamoss)  
Instagram: [ellamoss](https://instagram.com/ellamoss)



## THE DESIGNERS



## EMILIO SOSA

### PROMINENT COLORS

For Spring 2016, we are working with four color groups: a Dusty Sky Blue, Sunrise, a warm earthy Cayenne, a cool Midnight Navy and a mossy Green Verbant.

### INSPIRATION

Our colors are inspired by an excursion to New York's High Line Green space, which is a perfect mix of urban architecture and lush greenery. This Esosa SS16 collection takes your imagination on an adventure. It's inspired by nature's rhythmic vibrations and the city's kinetic energy.

### SIGNATURE COLORS

For Spring 2016, the most important color is our Sunrise Sky Blue. It's a color that looks cool and youthful and works with a range of skin tones.

### MUST-HAVE ITEM FOR SPRING 2016

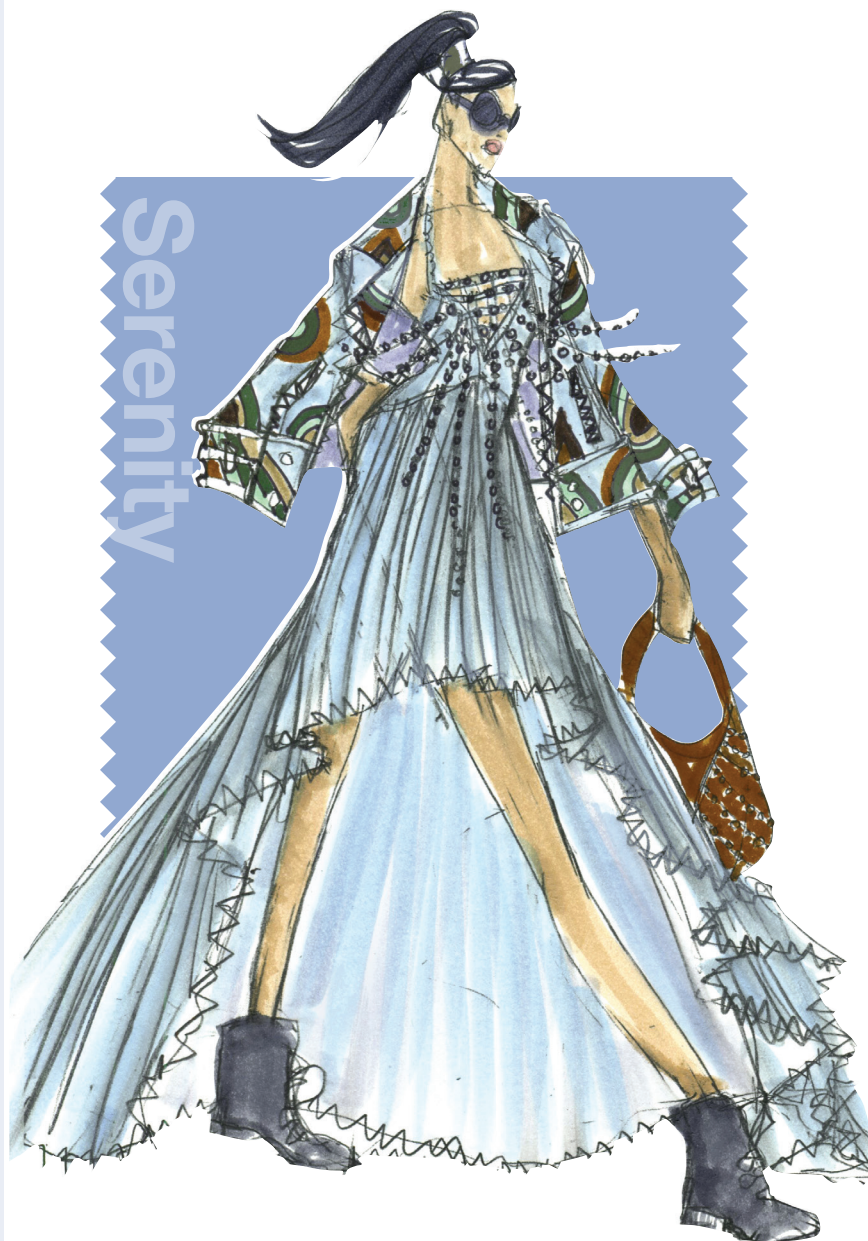
Our must-have item for Spring 2016 is the over-sized biker jacket, which can be worn for day over shorts or with our crocheted silk chiffon spaghetti-strap wrap gown as a cool cover up.

### HOW DO YOU USE COLOR TO IMPART A MOOD OR EMOTION?

In our SS16 collection, "Urban Rainforest," we use our Cayenne and Verbant colors to convey warmth and Sunrise to convey a tranquil and cool transition from day to evening.

### CONNECT WITH EMILIO SOSA

Website: [www.esosadesign.com](http://www.esosadesign.com)  
Facebook: [facebook.com/ESOSAdesign](https://facebook.com/ESOSAdesign)  
Twitter Handle: ESOSAfashion  
Pinterest: [pinterest.com/esosafashion](https://pinterest.com/esosafashion)  
Instagram: esosafashion



Serenity



Iced  
Coffee



Limpet  
Shell

## THE DESIGNERS



### RACHEL PALLY

#### PROMINENT COLORS

Warm, desert earth tones like PANTONE 16-1235 Sandstorm, PANTONE 16-1532 Crabapple and PANTONE 14-0848 Mimosa. Along with cool refreshing tones, like PANTONE 16-3110 Smoky Grape, PANTONE 15-4707 Blue Haze and PANTONE 18-4320 Aegean Blue.

#### INSPIRATION

Desert landscape, wildflowers, Joshua Tree and vintage Palm Springs.

#### SIGNATURE COLORS

PANTONE 18-4320 Aegean Blue flows throughout the collection. It appears in several prints as well as acts as a neutral solid that can be paired back to several of the other colors and prints in the collection.

#### MUST-HAVE ITEM FOR SPRING 2016

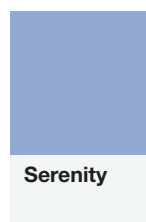
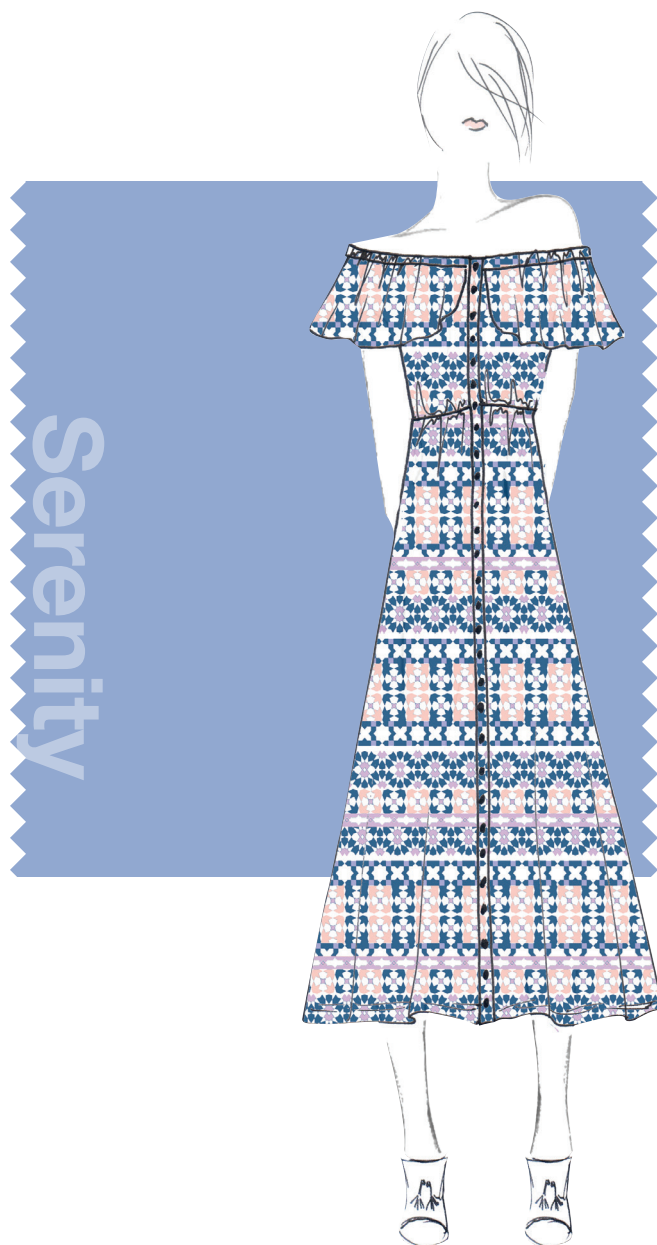
An off-the-shoulder folksy printed dress. I'm particularly in love with our Preston dress in our Morocco tile print that incorporates both the warm & cool colors of the season (Moonflower, Sol, Lavender). After winter, it just makes you excited for the sunshine.

#### HOW DO YOU USE COLOR TO IMPART A MOOD OR EMOTION?

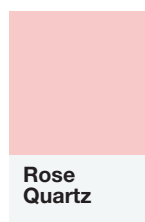
People are always looking to color, especially in the Spring, to get out of their winter blues and excited for the sun. We always reflect that in our spring collections by offering refreshing colors and prints to boost their mood!

#### CONNECT WITH RACHEL PALLY

Website: [www.rachelpally.com](http://www.rachelpally.com)  
Facebook: [facebook.com/rachelpally](https://facebook.com/rachelpally)  
Twitter Handle: RachelPally  
Pinterest: [pinterest.com/rachelpallyinc](https://pinterest.com/rachelpallyinc)  
Instagram: [rachelpally](https://instagram.com/rachelpally)  
Blog: [rachelpally.blogspot.com/](http://rachelpally.blogspot.com/)  
Tumblr: [rachelpally.tumblr.com](http://rachelpally.tumblr.com)



Serenity



Rose  
Quartz



Lilac Gray

## THE DESIGNERS

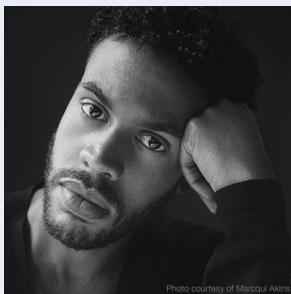


Photo courtesy of Marcus Akina

## HARBISON

### PROMINENT COLORS

This season revolves around pastels, nudes, and sunny brights: Pale Coral, Bleached Sand and Light Aqua against Bright Yellow and Summer Red.

### INSPIRATION

The colors were largely influenced by sun-bleached, cakey colors of "Guess Who's Coming to Dinner" and Slim Aarons' mid-century resort photography alongside the clean primary colors of the Bauhaus.

### SIGNATURE COLORS

Bleached Sand. Everything revolves around this clean neutral.

### MUST-HAVE ITEM FOR SPRING 2016

Bleached Sand Viscose Crepe Jumpsuit - a total fantasy look in one piece.

### HOW DO YOU USE COLOR TO IMPART A MOOD OR EMOTION?

Color, like smell and touch, invigorates the senses and takes us back to a particular time and place, igniting the accompanying mood and emotion immediately.

### CONNECT WITH HARBISON

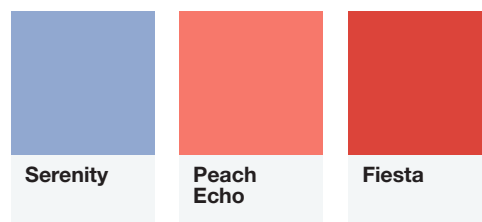
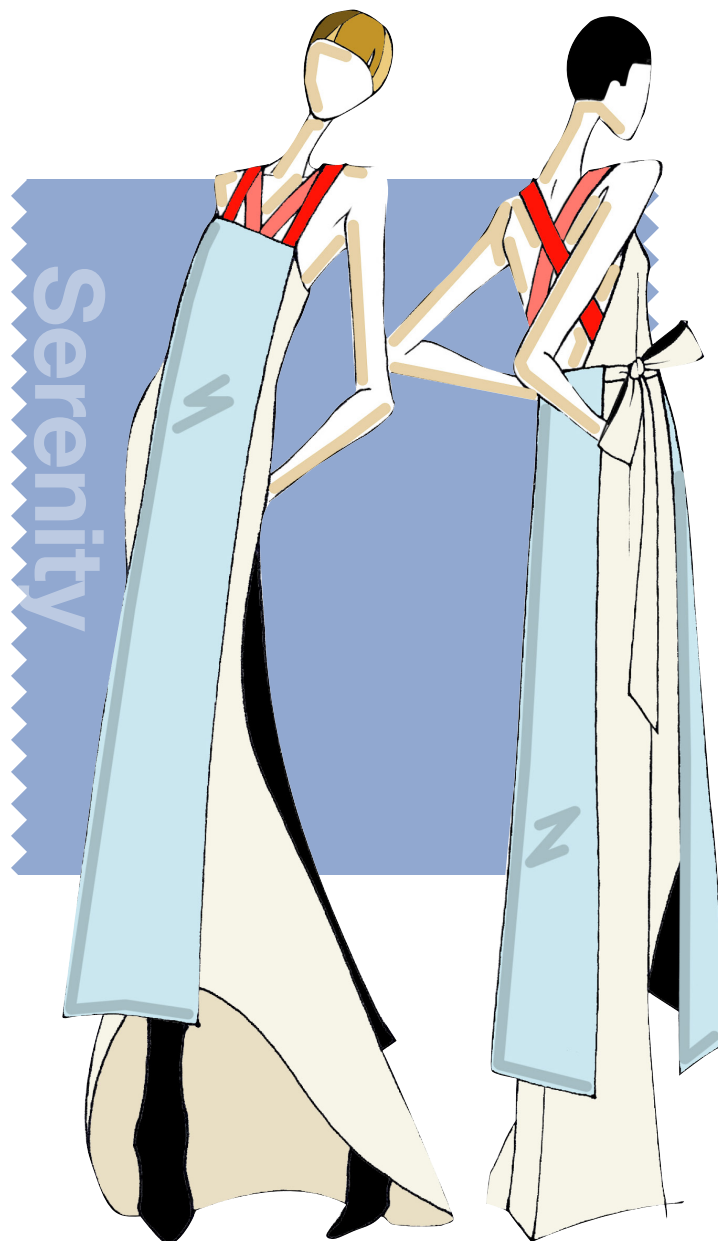
Website: [harbisoncollection.com](http://harbisoncollection.com)

Facebook: [facebook.com/hrbsncollection](https://facebook.com/hrbsncollection)

Twitter Handle: [hrbsncollection](https://twitter.com/hrbsncollection)

Pinterest: [pinterest.com/hrbsncollection](https://pinterest.com/hrbsncollection)

Instagram: [hrbsn](https://instagram.com/hrbsn)





## THE DESIGNERS



### GEORGINE

#### PROMINENT COLORS

For Spring 2016, we will be using a wide range of Blues, from bright Cobalt to Grayish and Mykonos Blue. In general, I love to play with different colors and color combinations. In addition to the “Blue story” there will be a lot of Lavender, Misted Yellow, Cypress, Radiant Orchid, Raspberry Red and some Neon colors to end the show!

#### INSPIRATION

Why does a jean jacket need to be made out of denim? Why can't an evening dress be made out of spandex? Rules are made to be broken so why not employ modern day technology to redesign and redefine the classics? The one constant in the age of the internet is that nothing is what it seems. The end results are textiles that share urban elements and a luxurious sense of touch and appearance in clothing that defy the conventional approach of how people normally work with these textiles. They provide a fresh perspective and an exciting look that will mix flawlessly with the modern day wardrobe.

#### SIGNATURE COLORS

For Spring/Summer 2016 I don't think there is one particular color that is the most important. In past seasons I would not be able to say the same; however, for this collection what is very important is how the colors engage with each other. The colors I have chosen have a great synergy!

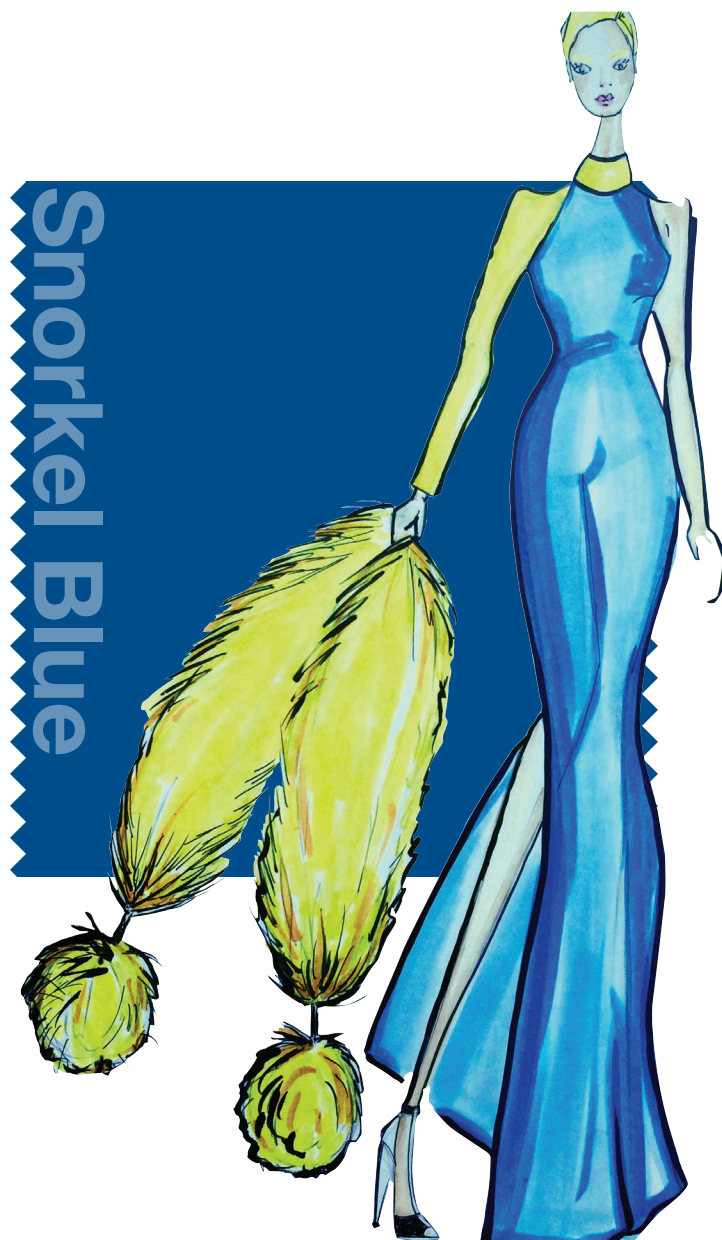
#### MUST-HAVE ITEM FOR SPRING 2016

The spandex knit dresses which are reversible and come in every color combination of the rainbow!

#### READ THE COMPLETE INTERVIEW WITH GEORGINE AT [PANTONE.COM/SPRING2016](http://PANTONE.COM/SPRING2016)

#### CONNECT WITH GEORGINE

Website: [www.georgine.com](http://www.georgine.com)  
facebook.com/GEORGINEofficial  
Twitter Handle: GEORGINESTUDIO  
Pinterest: [pinterest.com/GEORGINESTUDIO](http://pinterest.com/GEORGINESTUDIO)  
Instagram: [georginestudio](http://georginestudio)



**Snorkel  
Blue**



**Green  
Flash**

## THE DESIGNERS



### TADASHI SHOJI

#### PROMINENT COLORS

Building off of my Resort 2016 collection, PANTONE 14-0957 Spectra Yellow will be harmonized with shades of PANTONE 16-3931 Sweet Lavender, PANTONE 16-6030 Katydid, PANTONE 19-4039 Delft and PANTONE 13-2004 Potpourri.

#### INSPIRATION

This season, I will be delving deeper into my heritage and memories of Japan. I was drawn to the vibrancy of a blossoming Japanese garden which helped to inspire the color palette for spring.

#### SIGNATURE COLORS

Violet plays a key role this season which is shown in different hues of PANTONE 16-3931 Sweet Lavender and PANTONE 19-3951 Clematis Blue. It works as a statement color but also a complement to the other tones in the collection reminiscent of Japan.

#### MUST-HAVE ITEM FOR SPRING 2016

Spring will introduce many sporty separates that can be dressed up or down, depending on the occasion. One of my favorites is an oversized PANTONE 16-3617 Sheer Lilac windowpane sweatshirt with PANTONE 14-0957 Spectra Yellow iris-motif embroidery over a tea-length PANTONE 16-3931 Sweet Lavender and PANTONE 16-3617 Sheer Lilac tulle skirt.

#### HOW DO YOU USE COLOR TO IMPART A MOOD OR EMOTION?

I use color to bring my inspiration to life and convey the nostalgic feelings of distant memories. The color palette is a window to the past.

#### CONNECT WITH TADASHI SHOJI

Website: [www.tadashishoji.com](http://www.tadashishoji.com)  
Facebook: [facebook.com/tadashishoji](https://facebook.com/tadashishoji)  
Twitter Handle: [TadashiShoji](https://twitter.com/TadashiShoji)  
Pinterest: [pinterest.com/tadashishoji](https://pinterest.com/tadashishoji)  
Instagram: [tadashishoji](https://instagram.com/tadashishoji)  
Blog: [www.tadashishoji.com/blog](http://www.tadashishoji.com/blog)



**Snorkel  
Blue**



**Green  
Flash**



**Limpet  
Shell**

## THE DESIGNERS



### WHIT NY

#### PROMINENT COLORS

Primary tones mixed with neutrals are the main focus of Spring 2016. Cobalt mixed with Clay, Sand and Vermillion, Yellow and Mudd. The colors we are using the most are PANTONE 17-1558 Grenadine, PANTONE 18-3949 Dazzling Blue, PANTONE 12-0642 Aurora, PANTONE 13-1106 Sand Dollar and PANTONE 19-0814 Slate Black.

#### INSPIRATION

This season, we have mixed an arty tribal vibe with bold stripes and earth tones. Aside from the tribal prints and body painting that we were referencing, we also were drawn to photos of hot air balloons over the African savannas and tried to bring that visual contrast to the collection as well.

#### SIGNATURE COLORS

We love pops of Bright Yellow, such as PANTONE 12-0642 Aurora.

#### MUST-HAVE ITEM FOR SPRING 2016

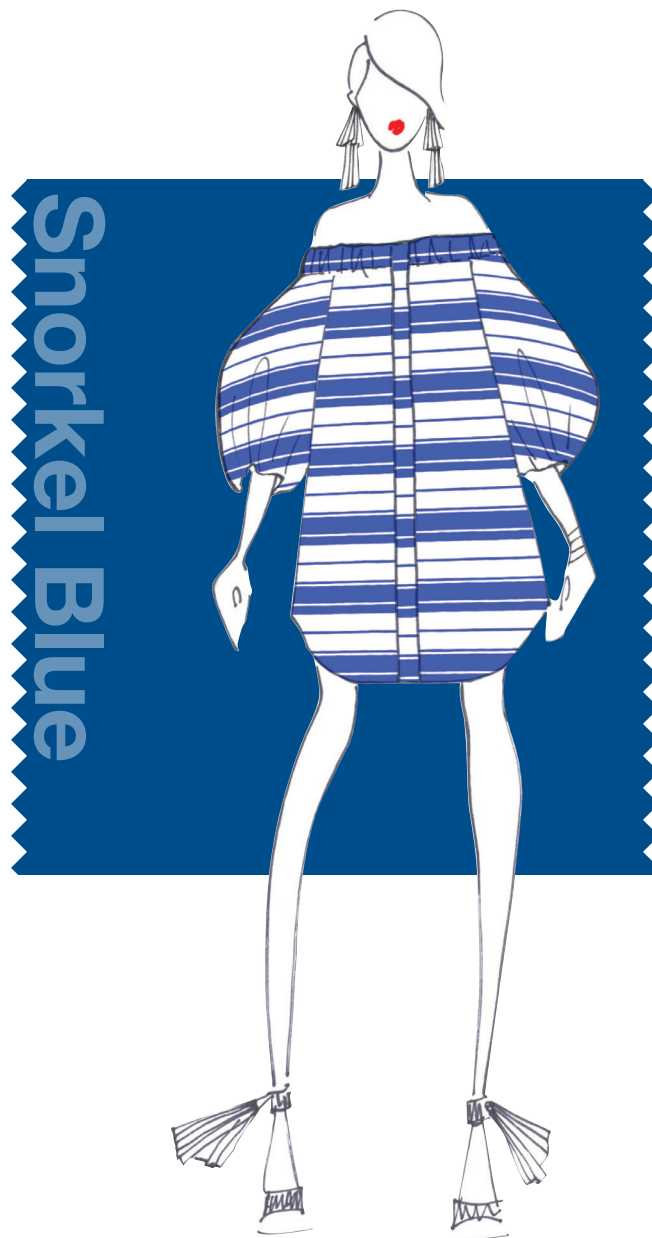
Off the shoulder dresses with balloon sleeves.

#### HOW DO YOU USE COLOR TO IMPART A MOOD OR EMOTION?

We usually lean towards bright, saturated colors as a base because we like the energy and boldness that they bring to the collection.

#### CONNECT WITH WHIT NY

Website: [whit-ny.com](http://whit-ny.com)  
Facebook: [facebook.com/whitnewyork](https://facebook.com/whitnewyork)  
Twitter Handle: [Whit\\_NY](https://twitter.com/Whit_NY)  
Pinterest: [pinterest.com/whitnewyork](https://pinterest.com/whitnewyork)  
Instagram: [whit\\_ny](https://instagram.com/whit_ny)  
Tumblr: [whit-ny.tumblr.com](https://whit-ny.tumblr.com)



**Snorkel  
Blue**

## THE DESIGNERS



### ANGELYS BALEK

#### PROMINENT COLORS

The sketch represents a combination of cool undertones that symbolize fruit and the freshness of spring, from Shell Pink to Apricot Orange.

#### INSPIRATION

My inspiration is Picasso's still life depicted in geometric form, based on my own freehand drawings.

#### SIGNATURE COLORS

I love Galaxy Blue because it is a vibrant, oceanic color. The color also reminds me of Picasso's Blue Period. I felt the Blue I chose symbolizes an end, which is bridged to a more joyful time, represented by vibrant Red and Pink, or the Rose Period.

#### MUST-HAVE ITEM FOR SPRING 2016

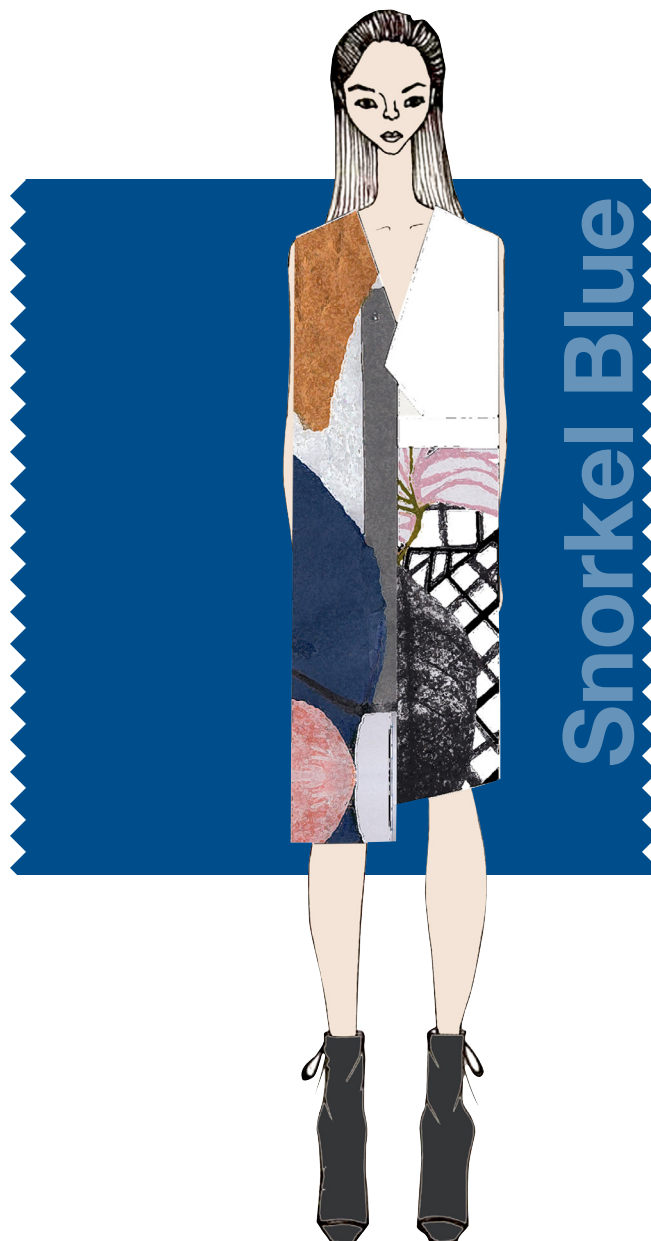
The must-have items for Spring 2016 are my printed shift dresses.

#### HOW DO YOU USE COLOR TO IMPART A MOOD OR EMOTION?

The colors I used in my Spring 2016 collection are reflective of my emotions at the time of creation. The colors are more vibrant, depicting my feeling of rejuvenation and restoration, mostly due to my health recovery. You'll find more cheerful vivid hues of Red, Orange, Pink and earth tones.

#### CONNECT WITH ANGELYS BALEK

Website: [angelysbalek.com](http://angelysbalek.com)  
Facebook: [facebook.com/angelysbalekab](https://www.facebook.com/angelysbalekab)  
Twitter Handle: [AngelysBalek](https://twitter.com/AngelysBalek)  
Pinterest: [pinterest.com/angelysbalek](https://www.pinterest.com/angelysbalek)  
Instagram: [angelysbalek](https://www.instagram.com/angelysbalek)



**Snorkel  
Blue**



**Rose  
Quartz**



**Lilac  
Gray**



## THE DESIGNERS



### CHARLES & RON

#### PROMINENT COLORS

Bright shades like Sunshine Yellow, Granada Sky Blue and Tangerine Orange are combined with a soft, sand color and highlighted with clean White and Black.

#### INSPIRATION

Our colors and prints are inspired by the colors of a Maltese traditional fishing boat called a “Luzzu.” The bright colored boats basking in the sun on the Mediterranean Sea inspired our Spring/Summer 2016 collection.

#### SIGNATURE COLORS

Sunshine Yellow, it is a warm color that evokes thoughts of a Mediterranean summer day.

#### MUST-HAVE ITEM FOR SPRING 2016

A Silk Satin mini dress with graphic “Luzzu” print in Sunshine Yellow.

#### HOW DO YOU USE COLOR TO IMPART A MOOD OR EMOTION?

The Charles & Ron collections are inspired by Malta's surroundings and heritage; the Mediterranean colors are a very important visual tool to bring that inspiration to life.

#### CONNECT WITH CHARLES & RON

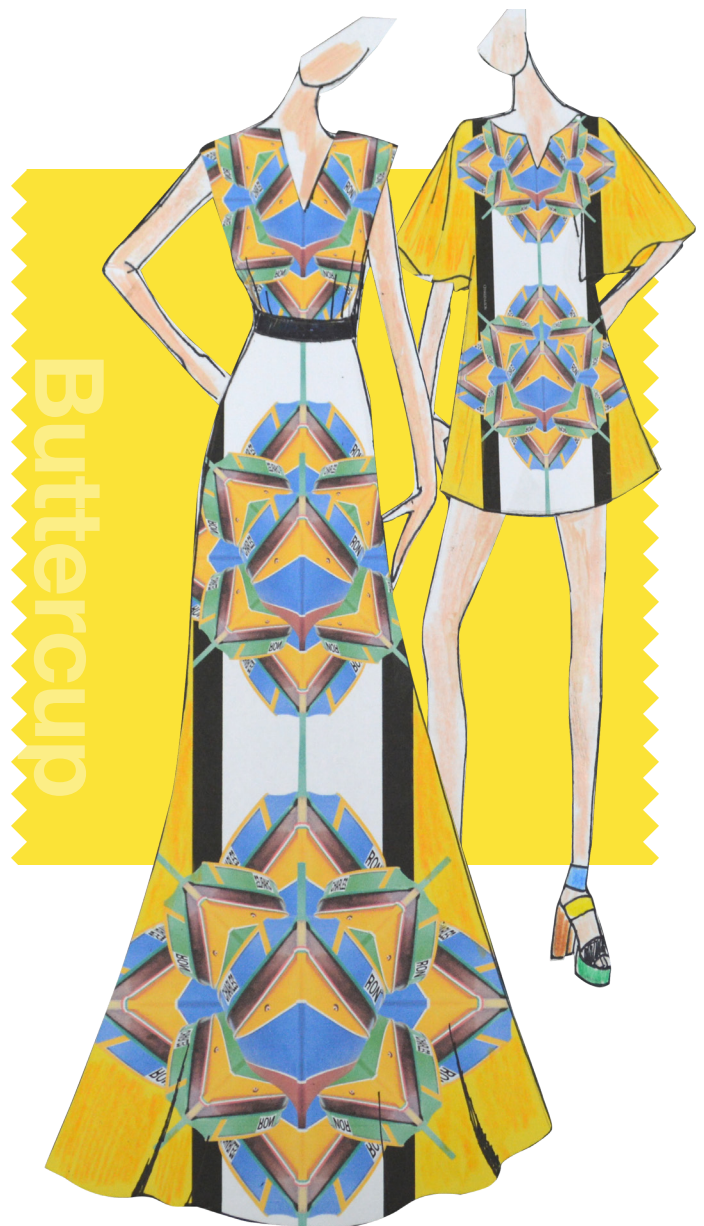
Website: [www.charlesandron.com](http://www.charlesandron.com)

Facebook: [facebook.com/charlesandron](https://facebook.com/charlesandron)

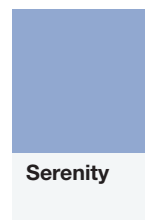
Twitter Handle: [charlesandron](https://twitter.com/charlesandron)

Instagram: [charlesandron](https://instagram.com/charlesandron)

Tumblr: [charlesandron.tumblr.com](https://charlesandron.tumblr.com)



Buttercup



Serenity



Rose  
Quartz

## THE DESIGNERS



### DAVID HART

#### PROMINENT COLORS

The Spring 2016 collection is inspired by the Bauhaus movement that came out of Eastern Europe in the 1910's, 1920's, and very early 1930's. The color palette is rooted in primary colors and breaks off into complementary pastels. All shades of Yellow are important this season, especially Canary Yellow, Dusty Yellow and Faded Sunflower. Also, the Blues like Deep Indigo, Robin's Egg Blue and Electric Cobalt are important.

#### INSPIRATION

The collection was inspired by the Bauhaus institution in Germany, specifically the Women's Weaving Workshop and the textiles that were created during the interwar period in eastern Europe.

#### SIGNATURE COLORS

All of the Yellows are important this season. I want men to feel excited about dressing up for Spring 2016 and Yellow is such a lively color.

#### MUST-HAVE ITEM FOR SPRING 2016

Our must-have item for Spring 2016 is our color-blocked fine gauge merino wool cardigan. It is Faded Sunflower with Deep Indigo sleeves with hints of primary colors.

#### HOW DO YOU USE COLOR TO IMPART A MOOD OR EMOTION?

American menswear has been so rooted in Black, Gray and Navy. By using color I've been able to create a fun, lively and happy mood for Spring 2016.

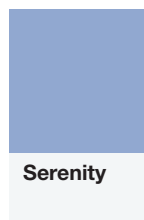
#### CONNECT WITH DAVID HART

Website: [davidhartnyc.com](http://davidhartnyc.com)  
Facebook: [facebook.com/pages/David-Hart-Co](https://facebook.com/pages/David-Hart-Co)  
Twitter Handle: [davidhartnyc](https://twitter.com/davidhartnyc)  
Pinterest: [pinterest.com/davidhartnyc](https://pinterest.com/davidhartnyc)  
Instagram: [davidhartnyc](https://instagram.com/davidhartnyc)

Buttercup



Buttercup



Serenity

# THE DESIGNERS



## GROUND ZERO

### PROMINENT COLORS

Spring/Summer 2016 is a very colorful collection, with the most prominent color combination being PANTONE 19-3951 Clematis Blue and PANTONE 19-1764 Lipstick Red.

### INSPIRATION

The collection's inspiration is "Oriental gangster." We incorporated many Oriental tattoo graphics and we feel the two colors (Clematis Blue and Lipstick Red) are very close to the classic Oriental tattoo ink colors.

### SIGNATURE COLORS

PANTONE 16-1452 Firecracker Orange is a very unexpected color throughout the collection, and we think it's brilliant to have this bright color as a highlight.

### MUST-HAVE ITEM FOR SPRING 2016

A very '90s-shaped strappy dress would be a must-have for Spring 2016, in Firecracker Orange.

### HOW DO YOU USE COLOR TO IMPART A MOOD OR EMOTION?

Ground Zero plays with a lot of graphics and we love keeping things original but with a twist; for example, keeping the Ocean Blue but adding an unexpected color like an Orange fish to incorporate a dramatic element. This is how we use color to impart our mood and emotion; we love things to be a bit unexpected.

### CONNECT WITH GROUND ZERO

Website: [zerolaboratory.com/collections.php](http://zerolaboratory.com/collections.php)

Facebook: [facebook.com/GroundZeroLab](https://www.facebook.com/GroundZeroLab)

Pinterest: [pinterest.com/groundzerolab](https://www.pinterest.com/groundzerolab)

Instagram: [ground\\_zero\\_official](https://www.instagram.com/ground_zero_official)



**Limpet  
Shell**

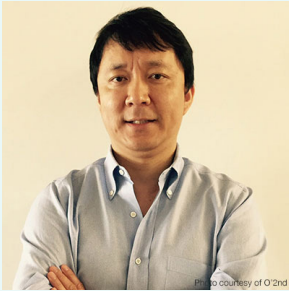


**Snorkel  
Blue**



**Fiesta**

## THE DESIGNERS



### O'2ND

#### PROMINENT COLORS

PANTONE 18-2436 Fuchsia Purple

#### INSPIRATION

Gary Hume's modern linear and color combination artwork and Henri Matisse's cutout artwork.

#### SIGNATURE COLORS

PANTONE 13-6006 Almost Aqua: it's a fresh pop of color for Spring and it is easy to put together an outfit with this color.

#### MUST-HAVE ITEM FOR SPRING 2016

Lace patch peplum shirt (White & Black).

#### HOW DO YOU USE COLOR TO IMPART A MOOD OR EMOTION?

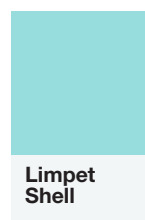
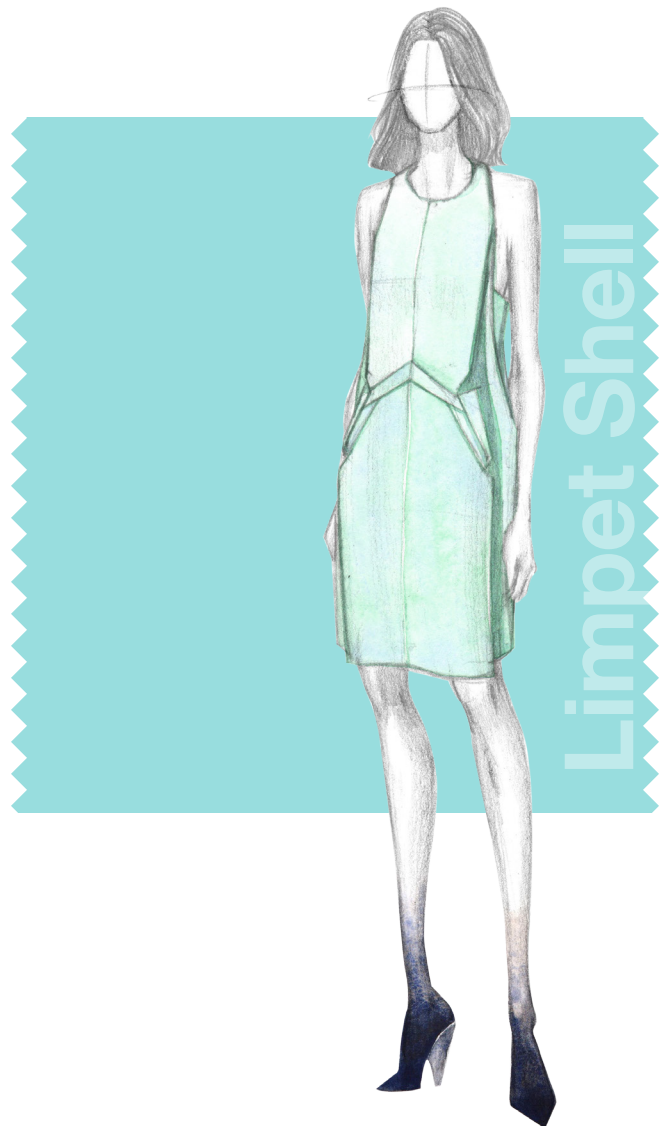
Raspberry Blush and Essence Green starts the Spring collection for a bright and impactful look. Pastel tones with White base go with the light feeling of the cut-out detail.

#### CONNECT WITH O'2ND

Website: [www.o2ndus.com](http://www.o2ndus.com)

Facebook: [facebook.com/O2ndkorea/app\\_188487411320051](https://www.facebook.com/O2ndkorea/app_188487411320051)

Twitter Handle: [@\\_o2nd](https://twitter.com/_o2nd)





## THE DESIGNERS



Photo courtesy of Kung Katherine

### KUNG KATHERINE

#### PROMINENT COLORS

Gray Sapphire is a cool pastel Blue with a hint of Silver.

Ashy Blush is a warm pastel Blush.

#### INSPIRATION

This Spring collection is very personal and nostalgic for me as it is paying homage to my hometown of Hong Kong. It's a romantic take on a concrete jungle during Spring time. I think pastel tones (symbolizing comfort and familiarity) with a dusting of Silver and Gray (representing the busy city) really embody the emotions I've attached to this collection.

#### SIGNATURE COLORS

Gray Sapphire – because it ties all the fabrications, prints and silhouettes together and represents the brand's ethos and brings the designs to life.

#### MUST-HAVE ITEM FOR SPRING 2016

A modern yet timeless day-to-night dress is a must-have for any city woman. This collection has great options in Blue, Blush, White, Silver and print.

#### HOW DO YOU USE COLOR TO IMPART A MOOD OR EMOTION?

Color (or print) is the first thing people notice on you. It is the most expressive component of an outfit and also highly personal. Through my designs and the choice of fabric color I want my ladies to feel feminine but strong, modern yet classic. Because I am one of them I always want them to feel powerful and confident.

#### CONNECT WITH KUNG KATHERINE

Website: [kungkatherine.com](http://kungkatherine.com)

Facebook: [facebook.com/katherine.kung.9](https://facebook.com/katherine.kung.9)

Twitter Handle: KungKatherine

Pinterest: [pinterest.com/kungkatherine](https://pinterest.com/kungkatherine)

Instagram: [kungkatherine](https://instagram.com/kungkatherine)

Limpet Shell



Limpet Shell



Lilac Gray

## THE DESIGNERS



### KARIGAM

#### PROMINENT COLORS

I am starting with several combinations of varying tones of White mixed with Black and a cool color palette, using colors such as PANTONE 11-4300 Marshmallow, PANTONE 19-0303 Jet Black, PANTONE 19-3921 Black Iris, PANTONE 15-1511 Mahogany Rose and PANTONE 17-4405 Monument.

#### INSPIRATION

I was inspired by modern and minimalist architecture, raw concrete mixed with White materials.

#### SIGNATURE COLORS

White is the most important color in my collection for Spring 2016 because it is clearly a minimalistic color that defines KARIGAM style.

#### MUST-HAVE ITEM FOR SPRING 2016

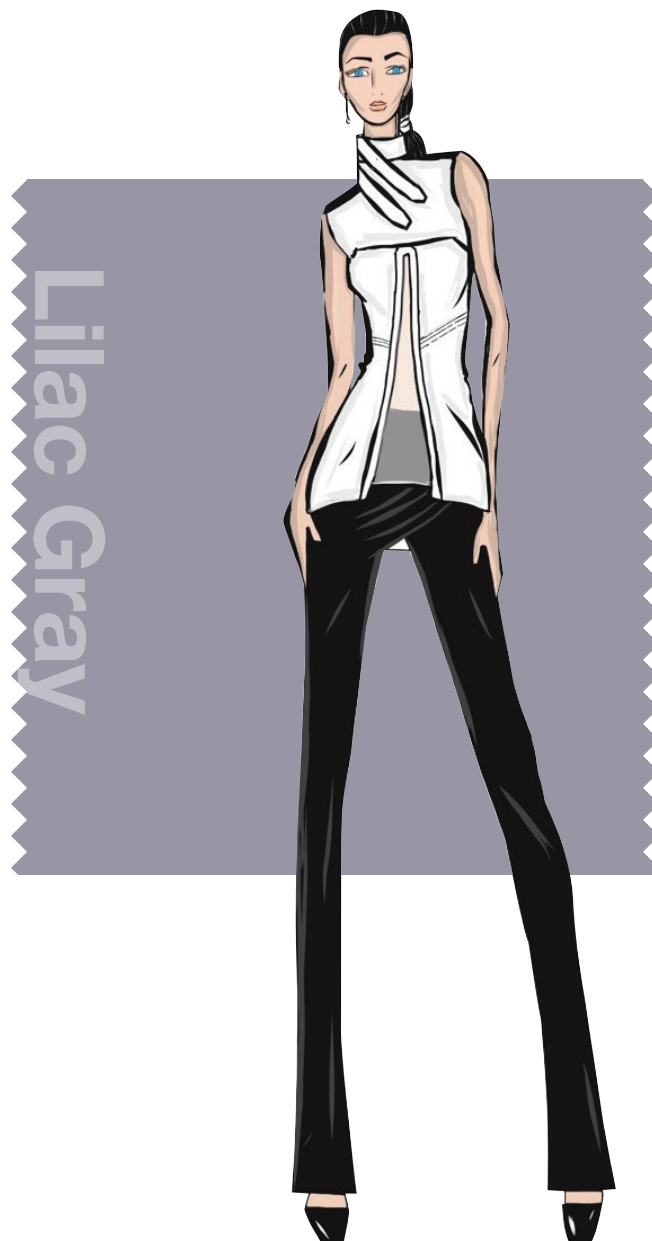
A White dress is the must-have item for Spring 2016.

#### HOW DO YOU USE COLOR TO IMPART A MOOD OR EMOTION?

I use color through mixing colors and making transitions through White styles.

#### CONNECT WITH KARIGAM

Website: [karigam.com](http://karigam.com)  
Facebook: [facebook.com/karigamofficialpage](https://www.facebook.com/karigamofficialpage)  
Twitter Handle: [karigamofficial](https://twitter.com/karigamofficial)  
Pinterest: [pinterest.com/KarigamOfficial](https://www.pinterest.com/KarigamOfficial)  
Instagram: [karigam\\_official](https://www.instagram.com/karigam_official)



Lilac Gray



Rose Quartz

## THE DESIGNERS



### REBECCA VALLANCE

#### PROMINENT COLORS

For our SS16 collection, we have decided to go with a warm palette. Delicate Pale Pinks, Mulberry Wine, Tangerine Orange and Sunkist Red feature strongly and are connected through classic hues, such as Black and warm Ivory.

#### INSPIRATION

Our palette was inspired by classic film noir and '90s pop culture. We have drawn the Blacks, Charcoals and pale Whites from the iconic theater and spliced them with bold splashes of color often found in '90s music videos.

#### SIGNATURE COLORS

For us, the most important color is our Tangerine Orange. It is a new, bold color that we have not worked with before. For us, it was a risk that really paid off. It's not a color often found on garment racks but in our case, it is the glue that ties all the other colors together.

#### MUST-HAVE ITEM FOR SPRING 2016

The must-have item for SS16 is the fit and flare skirt and the more colors the better! We have incorporated this shape into our range in a variety of styles, lengths, and of course, colors.

#### HOW DO YOU USE COLOR TO IMPART A MOOD OR EMOTION?

Color in itself will always create a mood and emotion, so it is important for us that the right palette is chosen for the collection we are creating. We are always assessing how a color will feel on the skin, who can wear it and where are they wearing it. The palette choice is one of the hardest points of the design process, we scrutinize over lab dips to create a story amongst color. Our SS16 range was all about classicism with a bold modern touch and color choice is what helped us achieve this.

#### CONNECT WITH REBECCA VALLANCE

Website: [rebeccavallance.com](http://rebeccavallance.com)

Facebook: [facebook.com/RebeccaVallanceCollection](https://facebook.com/RebeccaVallanceCollection)

Twitter Handle: [rebeccavallance](https://twitter.com/rebeccavallance)

Instagram: [rebeccavallance](https://instagram.com/rebeccavallance)



Lilac Gray



Fiesta



Rose Quartz

## THE DESIGNERS



### YOANA BARASCHI

#### PROMINENT COLORS

This season we liked the softening of colors and the transition of cool Pinks, as in classic PANTONE 15-2718 Fuchsia Pink into a symphony of Lilacs, such as PANTONE 15-2913 Lilac Chiffon, or cooler tones, such as PANTONE 16-3617 Sheer Lilac and PANTONE 14-3812 Pastel Lilac, and Violets, such as PANTONE 16-3320 Violet, PANTONE 15-3817 Lavender and PANTONE 16-3416 Violet Tulle. This intriguing palette of Violets and Lilacs looks particularly surprising and modern when accented with our favorite fiery PANTONE 17-1664 Poppy Red. PANTONE 16-3925 Easter Egg and deep Periwinkle Blue continue this moody dusk to dawn palette into the Blue family. When contrasted with Black and White, the palette takes a graphic turn in illustrated floral prints or embroideries.

#### INSPIRATION

The spectacular August sunsets over the Hudson River; the Black and White reality of the city is engulfed by the all-powerful drama of nature. Pink and Violet clouds on the New York West Side sky are just as magical of a backdrop as any distant, exotic island paradise.

#### SIGNATURE COLORS

Cool tone Pinks/Lilacs/Violets/Lavenders because of all their modern edge and eerie vibe.

#### MUST-HAVE ITEM FOR SPRING 2016

A high-waisted Pink/Lavender tailored midi skirt with an impossibly high slit.

#### HOW DO YOU USE COLOR TO IMPART A MOOD OR EMOTION?

We choose a color based on its ability to move you, to sway you; a star color for the season has to feel new and a little subversive to the status quo.

#### CONNECT WITH YOANA BARASCHI

Website: [yoanabaraschi.com](http://yoanabaraschi.com)  
Facebook: [facebook.com/YoanaBaraschi](https://facebook.com/YoanaBaraschi)  
Twitter Handle: YoanaBaraschi  
Pinterest: [pinterest.com/yoanabaraschi](https://pinterest.com/yoanabaraschi)  
Instagram: [yoanabaraschi](https://instagram.com/yoanabaraschi)  
Blog: [yoanabaraschi.com/pages/](http://yoanabaraschi.com/pages/)  
Tumblr: [yoanabaraschi.tumblr.com](https://yoanabaraschi.tumblr.com)



Lilac Gray



Lilac Gray



Fiesta



Rose Quartz

## THE DESIGNERS



Photo courtesy of Nigel Barker

### PAMELLA ROLAND

#### PROMINENT COLORS

For Spring 2016, sharp colors such as Citron and Poppy are paired with cooler tones of Mint and Blush creating an exciting palette that is balanced with neutral shades of Ivory, Silver and Black.

#### INSPIRATION

The work of American artist Frank Stella inspired us to develop unusual color combinations for Spring 2016 that have a very modern and elevated point of view.

#### SIGNATURE COLORS

Poppy is the color of the season at Pamella Roland which becomes especially vibrant in fabrics such as silk faille and double face satin.

#### MUST-HAVE ITEM FOR SPRING 2016

A party dress in Poppy and Blush silk faille.

#### HOW DO YOU USE COLOR TO IMPART A MOOD OR EMOTION?

This season, I'm using color to strike a tonal balance of exuberance and elegance.

#### CONNECT WITH PAMELLA ROLAND

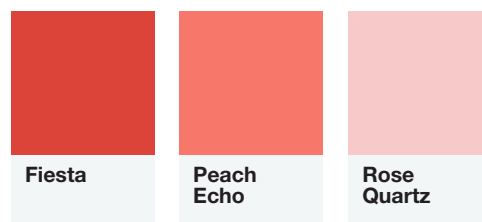
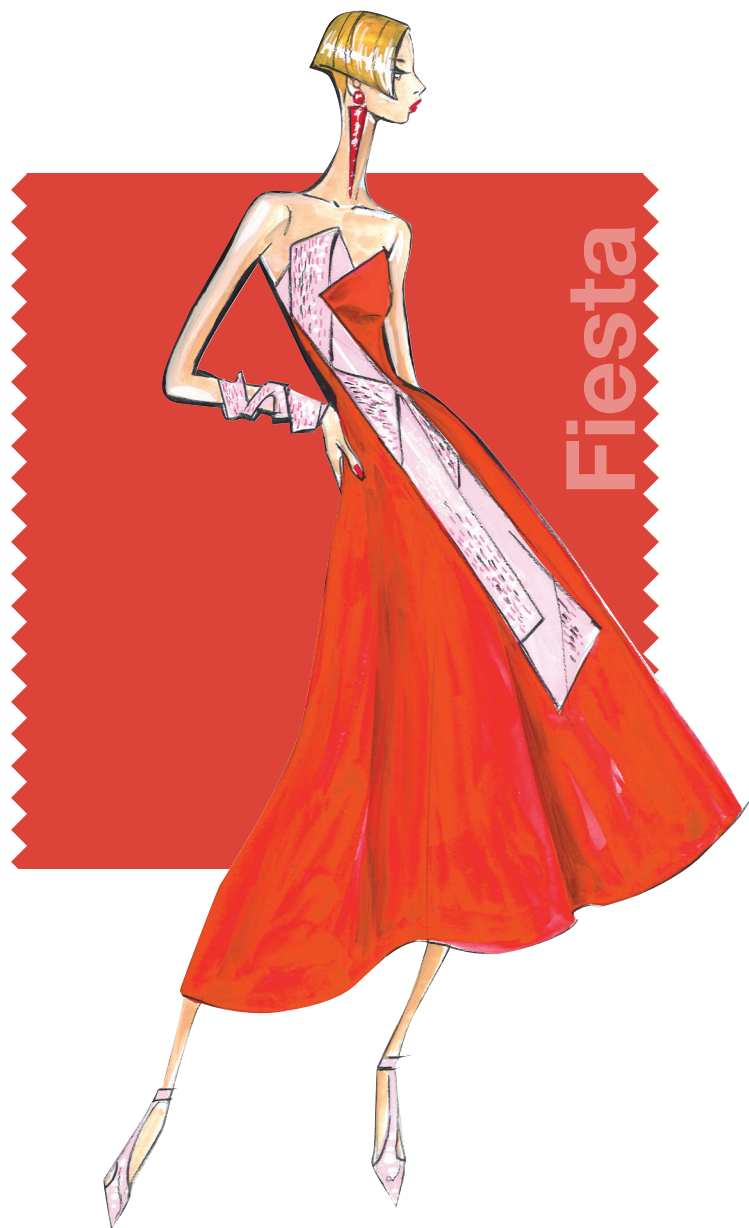
Website: [pamellaroland.com](http://pamellaroland.com)

Facebook: [facebook.com/pamellaroland](https://www.facebook.com/pamellaroland)

Twitter Handle: [pamellaroland](https://twitter.com/pamellaroland)

Pinterest: [pinterest.com/pamellaroland](https://www.pinterest.com/pamellaroland)

Instagram: [pamellaroland](https://www.instagram.com/pamellaroland)





## THE DESIGNERS



Roy Lewis, Consultant and Managing Director and Mary Alice Mauney, Founder and Creative Director of Malone Souliers

## MALONE SOULIERS

### PROMINENT COLORS

Strawberry Suede is a beautiful, warm color, and Rose Capretto is a cooler, softer pastel Pink. Both have a Blue undertone, which complement each other and flatter the skin tone.

Other colors we have used in SS16 are Aqua Blue Suede, Mint, Lemon and Larice, which all have cool undertones. All these colors, when paired together, work to balance the overall tone of the shoe. Either to strengthen and highlight certain colors, or to tone down and ground others.

We were also very careful with the Gold tone we used in our Platino Como material. We worked to ensure the Gold was not too bright or gaudy, but metal authentic. However, we were conscious that the color needed to be rich enough to avoid being washed out when worn farther away from the eye, on the feet.

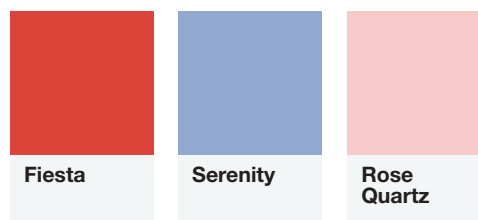
### INSPIRATION

When the collection was designed, it was January, so it was cold and dark in London. We wanted the colors we used to transport the wearer to a sunnier and brighter place. We felt many of our hardworking clients residing in the city deserved respite, and transportation to a warmer climate.

**READ THE COMPLETE INTERVIEW WITH MALONE SOULIERS AT [PANTONE.COM/SPRING2016](http://PANTONE.COM/SPRING2016)**

### CONNECT WITH MALONE SOULIERS

Website: [malonesouliers.com](http://malonesouliers.com)  
Facebook: [facebook.com/MaloneSouliers](https://www.facebook.com/MaloneSouliers)  
Twitter Handle: [MaloneSouliers](https://twitter.com/MaloneSouliers)  
Pinterest: [pinterest.com/malonesouliers](https://www.pinterest.com/malonesouliers)  
Instagram: [malonesouliers](https://www.instagram.com/malonesouliers)  
Vimeo: [vimeo.com/channels/MaloneSouliers](https://vimeo.com/channels/MaloneSouliers)



## THE DESIGNERS



## NOON BY NOOR

### PROMINENT COLORS

Fresh pastels: Soft Pinks, Lavender, Peach Amber, Metallic Rose Gold.

### INSPIRATION

Spring itself inspired our choice of colors. Spring is a very bright and fresh season, therefore we wanted our colors to be vibrant and awakening.

### SIGNATURE COLORS

We have a lot of important colors in the collection, but if we had to choose one it would be Blood Orange as it really adds a pop of color to the collection and makes it come alive.

### MUST-HAVE ITEM FOR SPRING 2016

Varsity Bomber Jacket, in the Black and White option.

### HOW DO YOU USE COLOR TO IMPART A MOOD OR EMOTION?

We definitely make sure to have our pops of colors in standout styles to set a certain mood.

### CONNECT WITH NOON BY NOOR

Website: [noonbynoor.com](http://noonbynoor.com)  
Facebook: [facebook.com/NoonByNoor](https://facebook.com/NoonByNoor)  
Twitter Handle: NoonByNoor  
Pinterest: [pinterest.com/noonbynoor](https://pinterest.com/noonbynoor)  
Instagram: [noonbynoor](https://instagram.com/noonbynoor)  
Tumblr: [noonbynoor.tumblr.com](https://noonbynoor.tumblr.com)



Iced  
Coffee



Rose  
Quartz

## THE DESIGNERS

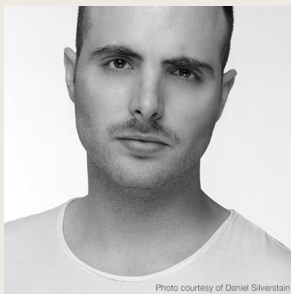


Photo courtesy of Daniel Silverstain

### DANIEL SILVERSTAIN

#### PROMINENT COLORS

The collection will present a range of neutral hues and tones (Snow White, Chalk Stone, Sand, Concrete and Black), mixed with metals (Silver, Copper, Steel) and geometric splashes of four primary colors (Red, Blue, Yellow, Green).

#### INSPIRATION

The inspiration of this season is Montreal's Expo 1967 – the famous World's Fair of the 20th Century. The neutral colors and metals came from the landscape of the metropolis of Montreal. The primary colors are symbolizing national flags.

#### SIGNATURE COLORS

This collection will be four colors: the primary Red, Blue, Green, and Yellow.

#### MUST-HAVE ITEM FOR SPRING 2016

The Primary Snake-Skin Multi-Yarn Jacquard Sports Bra and Pleated Eyelet Skirt.

#### HOW DO YOU USE COLOR TO IMPART A MOOD OR EMOTION?

I use primary colors to add excitement and fun to neutral relaxed tones – a perfect representation of the Expo 67.

#### CONNECT WITH DANIEL SILVERSTAIN

Website: [danielsilverstain.com](http://danielsilverstain.com)

Facebook: [facebook.com/danielsilverstain](https://facebook.com/danielsilverstain)

Twitter Handle: [DSilverstainNYC](https://twitter.com/DSilverstainNYC)

Pinterest: [pinterest.com/danielsilver](https://pinterest.com/danielsilver)

Instagram: [danielsilverstain](https://instagram.com/danielsilverstain)



Iced  
Coffee



Rose  
Quartz



## THE DESIGNERS



### ANGEL SANCHEZ

#### PROMINENT COLORS

Spring 2016 is about vibrant colors: PANTONE 18-1651 Cayenne, PANTONE 14-0244 Bright Lime Green, PANTONE 17-2031 Fuchsia Rose and PANTONE 14-0852 Freesia.

#### INSPIRATION

This collection is inspired by the exuberance of the Cayena flower – also known as Hibiscus, which is very popular in my country, Venezuela, and the Caribbean Islands. My inspiration stemmed from interpreting its shape and intense colors for a sunny and cheerful spring.

#### SIGNATURE COLORS

I am obsessed with Lime Green.

#### MUST-HAVE ITEM FOR SPRING 2016

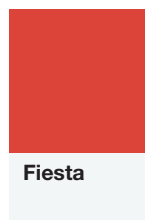
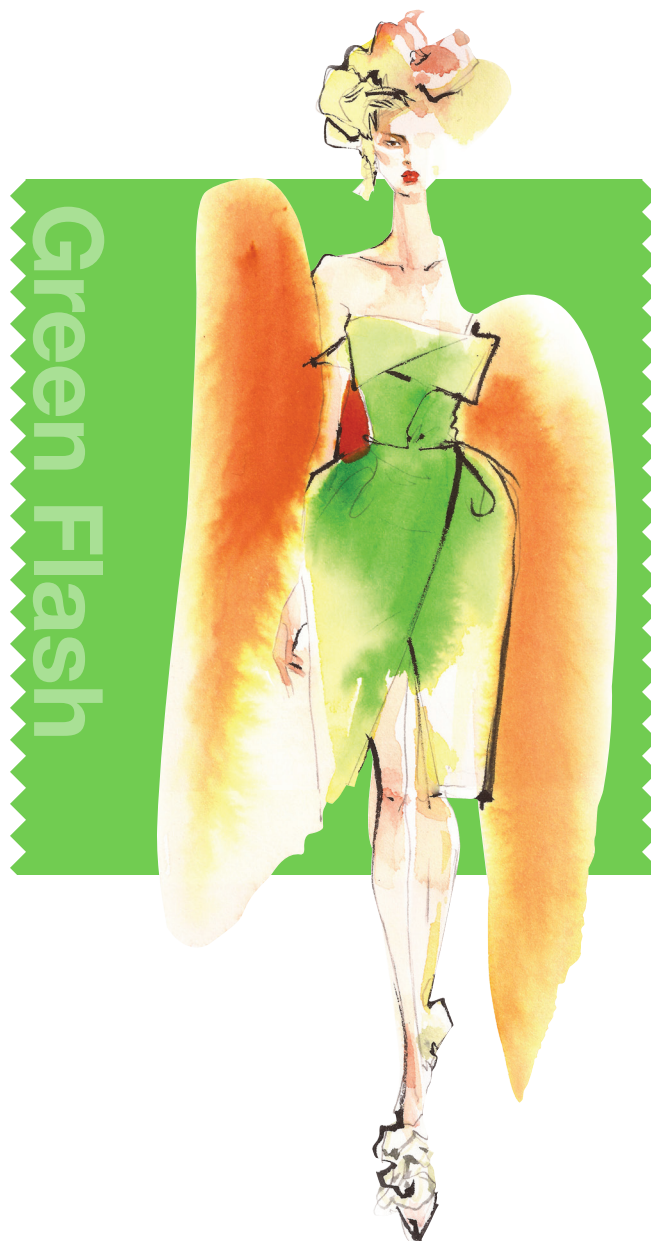
In my opinion, the must-have item for Spring 2016 is a tea-length Lime Green textured organza strapless dress with dramatic folded pleats. It is couture, but at the same time very young.

#### HOW DO YOU USE COLOR TO IMPART A MOOD OR EMOTION?

I wanted to achieve a tropical garden — full of light, dramatic forms and, of course, a lot of color.

#### CONNECT WITH ANGEL SANCHEZ

Website: [angelsanchezusa.com](http://angelsanchezusa.com)  
Facebook: [facebook.com/angelsanchezusa](https://www.facebook.com/angelsanchezusa)  
Twitter Handle: [angelsanchezpr](https://twitter.com/angelsanchezpr)  
Pinterest: [pinterest.com/angelsanchezpr](https://www.pinterest.com/angelsanchezpr)  
Instagram: [angelsanchezpr](https://www.instagram.com/angelsanchezpr)  
Tumblr: [angelsanchezpr.tumblr.com](https://angelsanchezpr.tumblr.com)



## THE DESIGNERS



### NICOLE MILLER

#### PROMINENT COLORS

Black and White with pops of bright Turquoise and Raspberry. Olive drab with burnished Lilac and fiery Coral.

#### INSPIRATION

The city has inspired this collection – the real gritty street feeling and its contrast with nature in the city.

#### SIGNATURE COLORS

Turquoise appears in many of my prints. The prettiness of it contrasts with the hard-edged street vibe of the collection.

#### MUST-HAVE ITEM FOR SPRING 2016

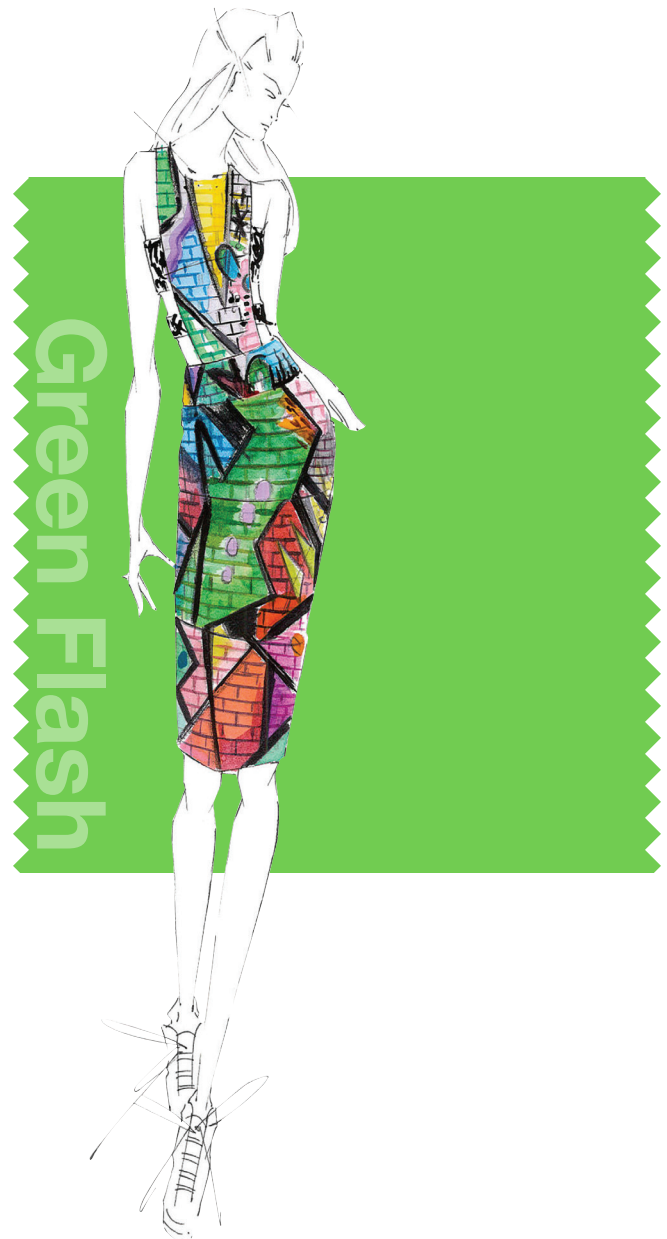
One of my braided and knotted soutache blouses in a Black and White print.

#### HOW DO YOU USE COLOR TO IMPART A MOOD OR EMOTION?

Color gives everyone a lift. It has a happy vibe. I am never a fan of muted tones.

#### CONNECT WITH NICOLE MILLER

Website: [www.nicolemiller.com](http://www.nicolemiller.com)  
Facebook: [facebook.com/NicoleMiller](https://facebook.com/NicoleMiller)  
Twitter Handle: NicoleMillerNYC  
Pinterest: [pinterest.com/nicolemillernyc](https://pinterest.com/nicolemillernyc)  
Instagram: [nicolemillernyc](https://instagram.com/nicolemillernyc)  
Tumblr: [nicolemillernyc.tumblr.com](https://nicolemillernyc.tumblr.com)



**Green  
Flash**



**Limpet  
Shell**



**Fiesta**



# THE INFLUENCERS

# THE INFLUENCERS



## RINA STONE

CREATIVE DIRECTOR, *INSTYLE* MAGAZINE

### PROMINENT COLORS

I think we will see many more Pastels as neutrals. Pale Mint (PANTONE 9041 C) and Whisper Pink (PANTONE 9286 C) mixed with soft Caramels.

### INSPIRATION

They are very soothing and in these hyper-hectic times offer comfort, escape and calm.

### SIGNATURE COLORS

I hope it's Pale Mint. It's so subtle and can be mistaken for stone, depending on the fabric. Its pairings are endless; I even like it with a touch of Orange.

### MUST-HAVE ITEM FOR SPRING 2016

Fall 2015 showed some great statement shoes, like Balenciaga and Jason Woo. I would love to see that trend continue. I always love an accent of Warm Orange with a nice Magenta undertone like (PANTONE 172 C).

### HOW DO YOU USE COLOR TO IMPART A MOOD OR EMOTION?

We use unexpected pairings to evoke a level of excitement. The right combination can elevate your mood or cause a beautiful calm.

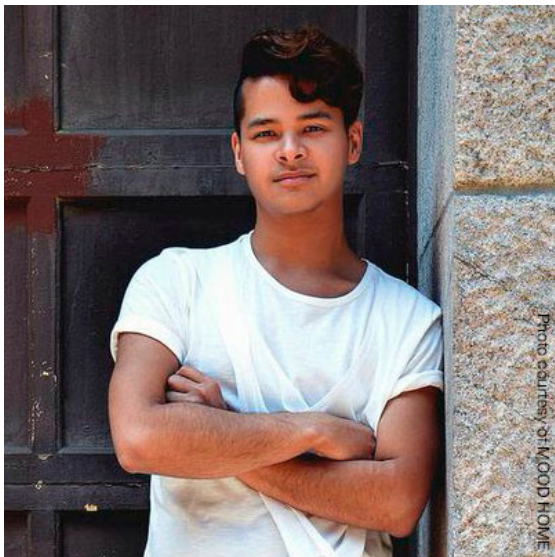
### CONNECT WITH RINA STONE

Facebook: [facebook.com/rina.stone](https://facebook.com/rina.stone)

Twitter Handle: [rinajoystone](https://twitter.com/rinajoystone)

Pinterest: [pinterest.com/rinajoymig](https://pinterest.com/rinajoymig)

# THE INFLUENCERS



## WIRA QUESADA HOME DEPARTMENT MANAGER, MOOD FABRICS

### PROMINENT COLORS

The colors that are most prominent in our fabrics this season will be a mix of Fluorescent Jewel Tones and Pastels both mixed together. Blended on fabrics with neutral undertones that vary in textures like cotton canvases and lush cut velvet. It was important for us to have textiles that would be versatile and functional for both interior and fashion designers to use.

### INSPIRATION

The inspiration for our color palette this season came from the colors found in natural stones. We were inspired by the mix of colors you can find in stones like Turquoise, Amethyst and especially in Opal. Our clients really respond well to these colors, so we wanted to incorporate patterns that also fused these colors together or that had geometric shapes that would remind us of the stones. One of our favorite patterns this season is a White diamond pattern with a Charcoal Gray background.

### SIGNATURE COLORS

The most important color this season would probably be a solid Turquoise, like the PANTONE 15-5519 Turquoise. This color is found in most of the fabrics we have this season.

### MUST-HAVE ITEM FOR SPRING 2016

Our must-have item this season is a Bright Yellow velvet. The color in this fabric is amazing!

### HOW DO YOU USE COLOR TO IMPART A MOOD OR EMOTION?

We love color here at Mood. We use colors to display current themes, trends or color stories. Colors are also great to use on our window displays to influence our customers to buy the colors or “MOOD” we show per season.

### CONNECT WITH MOOD INTERIORS

Website: [moodfabrics.com](http://moodfabrics.com)  
Facebook: [facebook.com/mood.fabrics](https://facebook.com/mood.fabrics)  
Twitter Handle: [mood\\_fabrics](https://twitter.com/mood_fabrics)  
Pinterest: [pinterest.com/moodfabrics](https://pinterest.com/moodfabrics)  
Instagram: [moodfabrics](https://instagram.com/moodfabrics)

# THE INFLUENCERS



Photo courtesy of Rachel McGinn

## DALLAS SHAW FASHION ILLUSTRATOR

### PROMINENT COLORS

I'm working on not only a book, but also my own product line and keeping a consistent color story across the board is key. Blush and Salmon Pinks paired with Poppy Red, Metallic Gold and Warm Whites repeat again and again for the Dallas Shaw team. And every now and then? Neon for the win.

### INSPIRATION

My brand is based on my own personal aesthetic and these colors are the shades I naturally gravitate to when paired together. Who can resist shiny Gold lettering against clean White backgrounds?

### SIGNATURE COLORS

Salmon, Blush and Neon Pink - but always paired with a second unexpected color. I (and the Dallas Shaw followers) like to mix things up a bit.

### MUST-HAVE ITEM FOR SPRING 2016

I'll be searching high and low for a lightweight tailored, but still slouchy, ankle pant in a light shade in a Peachy Pink or a Warm Cream tone.

### HOW DO YOU USE COLOR TO IMPART A MOOD OR EMOTION?

I'm a fashion illustrator, so telling a story with color is my job. Brights against White for Summer make my clients feel happy, while deeper shades mixed with neutrals for Fall make them feel chic and sultry.

### CONNECT WITH DALLAS SHAW

Website: [dallasshaw.com](http://dallasshaw.com)  
Facebook: [facebook.com/dallas.shaw.982](https://facebook.com/dallas.shaw.982)  
Twitter Handle: [dallasshaw](https://twitter.com/dallasshaw)  
Pinterest: [pinterest.com/dallasshaw/pins](https://pinterest.com/dallasshaw/pins)  
Instagram: [dallasshaw](https://instagram.com/dallasshaw)  
Blog: [dillydallas.blogspot.com](http://dillydallas.blogspot.com)



# THE INFLUENCERS



## KEN DOWNING

FASHION DIRECTOR, NEIMAN MARCUS

### PROMINENT COLORS

Important colors as we approach Spring 2016 runway will be bold, bright, clear color.

Sun Ripe Tomato Red

Fresh Cut Grass Green

Happy Face Yellow

### INSPIRATION

I think with my gut, my heart, my soul. Fashion is an industry of emotion, awareness of current runways, art, music, movies, museum and gallery exhibits, interior design and food, all play into the process of picking color.

### SIGNATURE COLORS

Sun Ripe Tomato Red will be an important color at Neiman Marcus for the coming Spring season. Although Red traditionally means stop, Red for spring means GO! Red Ahead into a season of statement making, attention getting color. Red is the color of passion. Customers are passionate about Red!

### MUST-HAVE ITEM FOR SPRING 2016

I love the idea of a Red shoe. It excites everything you will wear for the coming season. A bright, red lip says hello, and invites conversation, a necessity in a world obsessed with digital text conversation.

### HOW DO YOU USE COLOR TO IMPART A MOOD OR EMOTION?

Color attracts, it excites and ignites the imagination. Color gives immediate credit in a room and in a wardrobe, proving that you live your life on the right side of relevance.

### CONNECT WITH KEN DOWNING & NEIMAN MARCUS

Website: [www.neimanmarcus.com](http://www.neimanmarcus.com)

Facebook: [facebook.com/neimanmarcus](https://facebook.com/neimanmarcus)

Twitter Handle: [neimanmarcus](https://twitter.com/neimanmarcus)

Pinterest: [pinterest.com/neimanmarcus](https://pinterest.com/neimanmarcus)

Instagram: [kendowningnm](https://instagram.com/kendowningnm)

Blog: [blog.neimanmarcus.com](http://blog.neimanmarcus.com)

# PANTONE®

## FASHION COLOR REPORT

SPRING 2016 New York Fashion Week  
September 10-17

A publication of the Pantone Color Institute

Rose Quartz  
C 0 M 24 Y 15 K 0

Peach Echo  
C 0 M 65 Y 53 K 0

Serenity  
C 42 M 24 Y 3 K 0

Snorkel Blue  
C 100 M 49 Y 7 K 13

Buttercup  
C 2 M 3 Y 91 K 0

Limpet Shell  
C 34 M 0 Y 18 K 0

Lilac Gray  
C 37 M 31 Y 22 K 11

Fiesta  
C 2 M 85 Y 89 K 0

Iced Coffee  
C 21 M 36 Y 57 K 18

Green Flash  
C 49 M 0 Y 83 K 0

Follow Us     @pantone #FashionColorReport

Pantone LLC, 590 Commerce Blvd., Carlstadt, NJ 07072 Tel: 201.935.5500. PANTONE Colors displayed here may not match PANTONE-identified standards. Consult current PANTONE FASHION+HOME Color System publications for accurate color. PANTONE® and other Pantone LLC trademarks are the property of Pantone LLC. Pantone LLC is a wholly owned subsidiary of X-Rite, Incorporated. All other trademarks are the property of their respective owners. © Pantone LLC, 2015. All rights reserved.